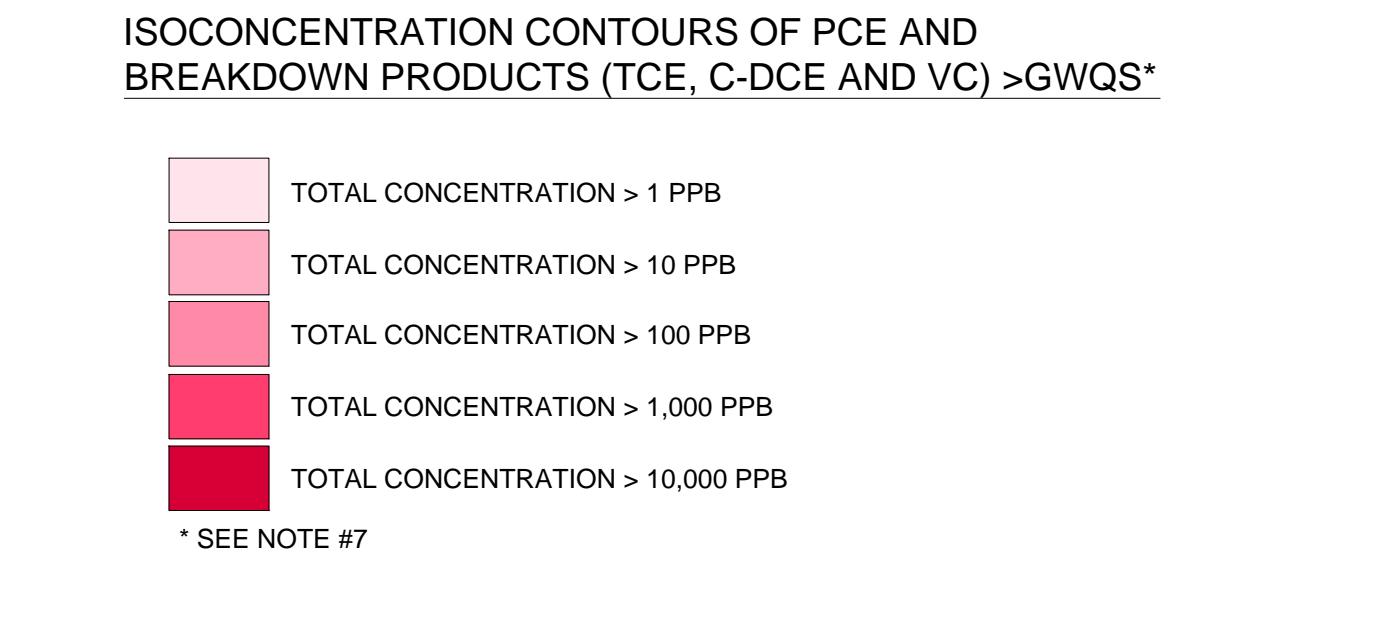
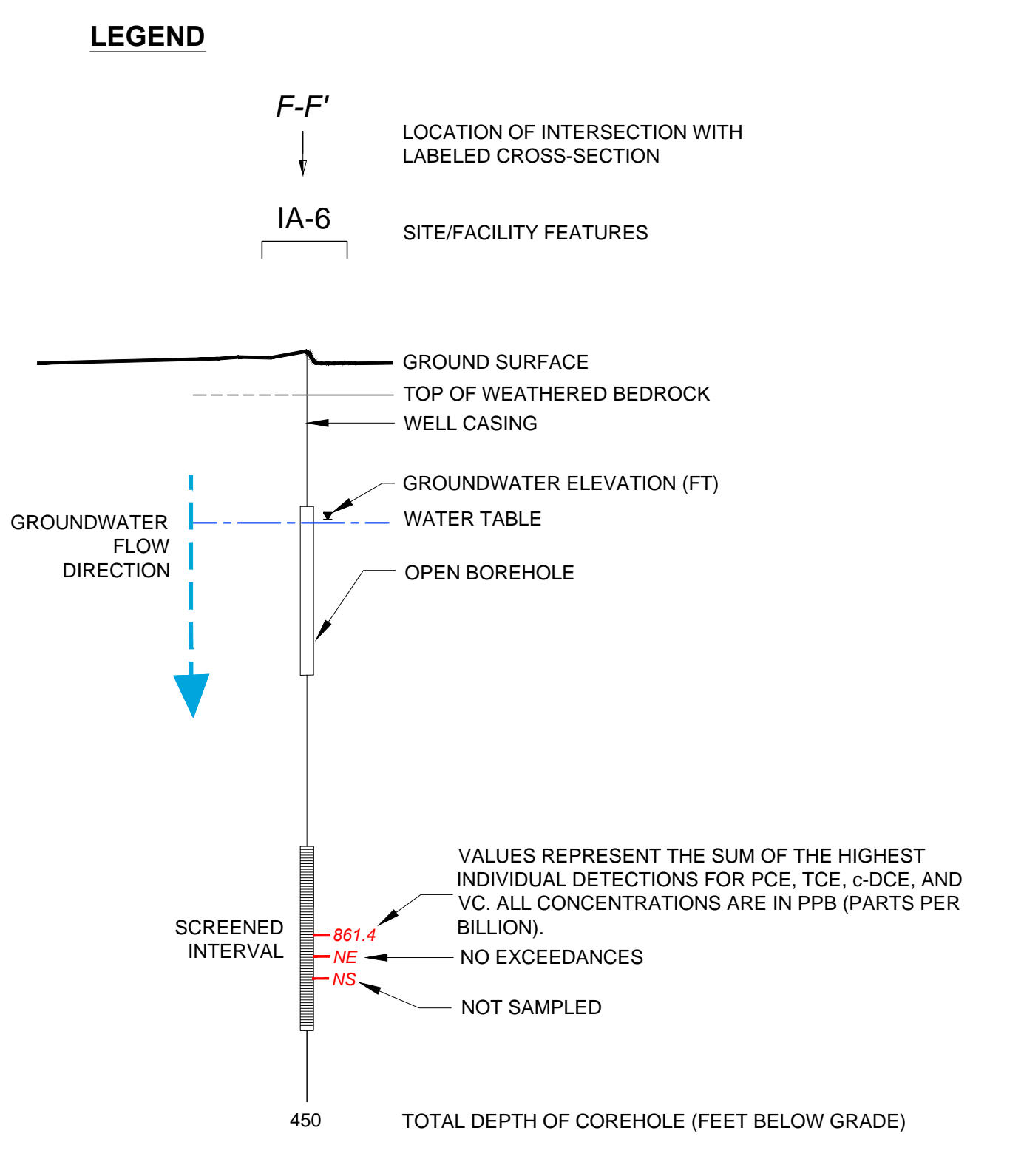
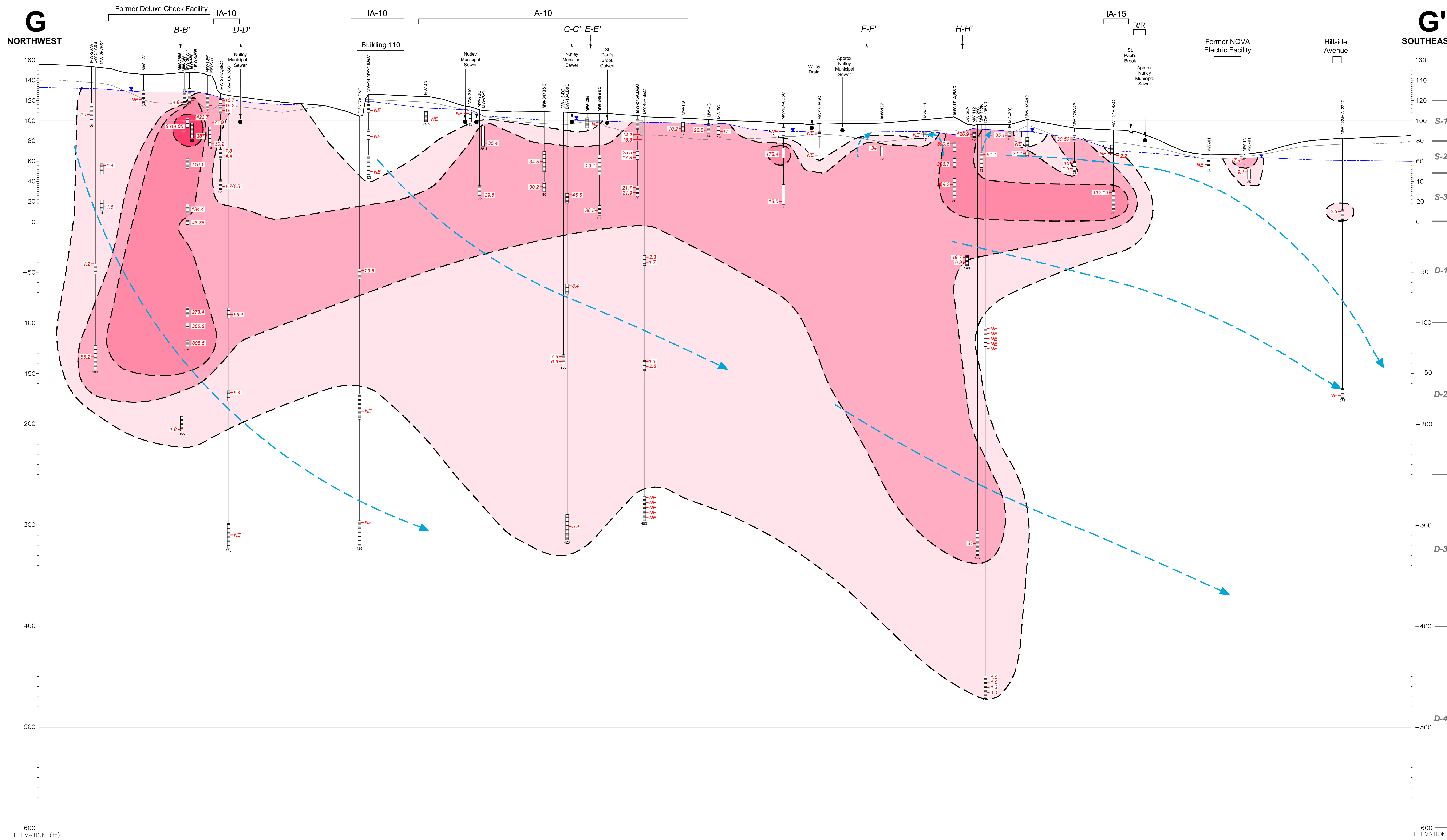
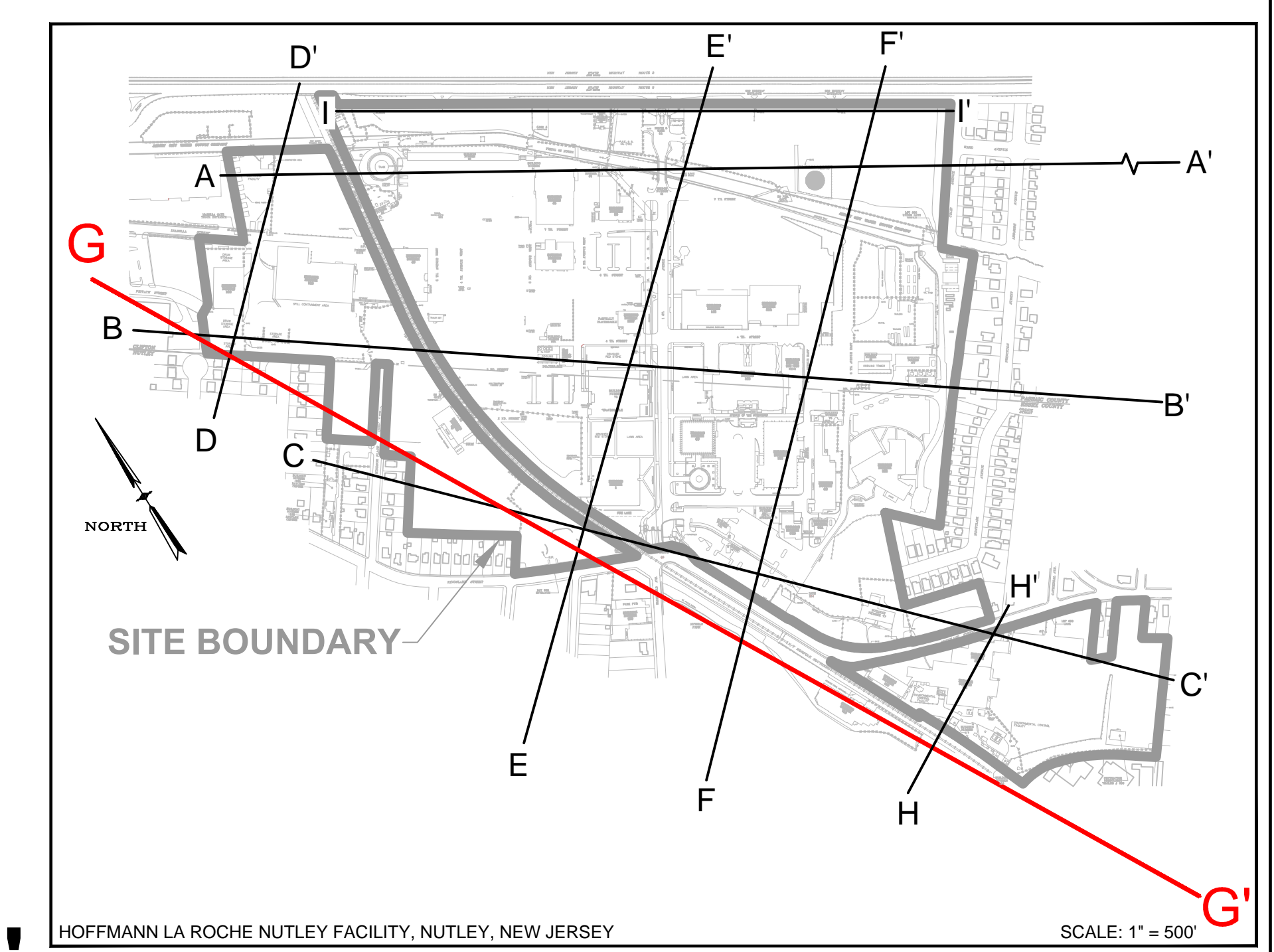


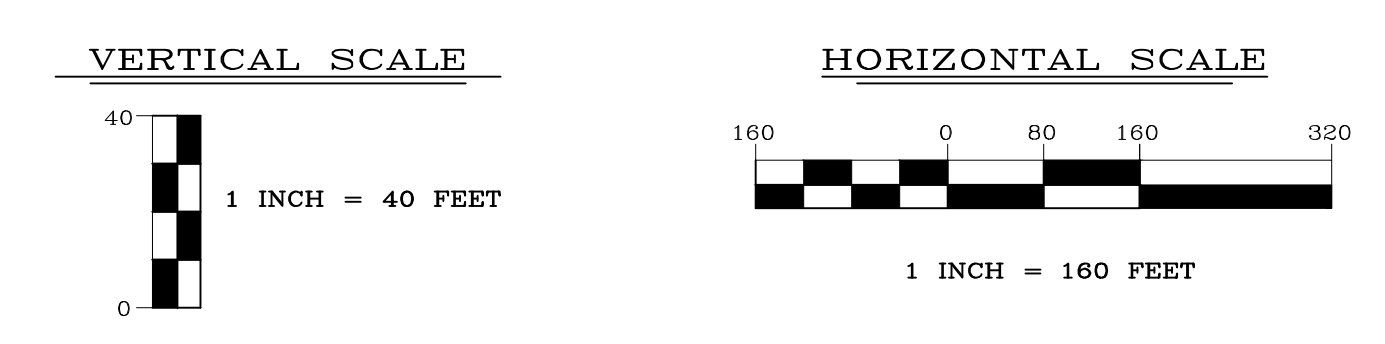
**CROSS-SECTION LOCATION**



- NOTES:**
- COREHOLES HAVE BEEN SEALED WITH BLANK FLUTE LINERS.
  - GROUND SURFACE IS BASED UPON THE SURFACE ELEVATION ALONG G-G'.
  - SOME WELLS HAVE BEEN PROJECTED UP TO 300 FEET TO CONSTRUCT THIS VERTICAL SECTION AND ARE DISPLAYED AT ACTUAL SURVEYED ELEVATIONS.
  - LITHOLOGIC CONTACTS ARE DASHED WHERE INFERRED.
  - ELEVATION DATUM NAVD 1988; FEET ABOVE MEAN SEA LEVEL.
  - R/R = RAILROAD.
  - ONLY CVOCs DETECTED ABOVE NJDEP GROUND WATER QUALITY STANDARD (GWQS) ARE INCLUDED IN ISOCONCENTRATION CONTOURS.
  - MW-126B AND MW-126C WERE GRAB SAMPLED VIA BAILER.
  - PDB = PASSIVE DIFFUSION BAG.
  - PCE = TETRACHLOROETHENE.
  - TCE = TRICHLOROETHENE.
  - c-DCE = CIS-1,2-DICHLOROETHENE.
  - VC = VINYL CHLORIDE.

ENGINEER IN RESPONSIBLE CHARGE OF THE WORK SHOWN ON THIS DRAWING  
 DATE: \_\_\_\_\_ SIGNATURE: \_\_\_\_\_  
 PROFESSIONAL ENGINEER LIC. # \_\_\_\_\_

**TRC**  
 TRC ENVIRONMENTAL CORP.  
 41 SPRING STREET  
 NEW PROVIDENCE, NEW JERSEY 07974  
 908-988-1700



REV	DATE	BY	DESCRIPTION
1	10/01/14	DS	FINAL ANNUAL REPORT DRAFT ISSUED FOR REVIEW
0	06/21/14	DS	DRAFT ISSUED FOR REVIEW

DRAWING TITLE NUTLEY SITE REMEDIATION PROJECT		PROJECT TITLE FIGURE B2 CVOC DISTRIBUTION IN GROUNDWATER CROSS-SECTION G-G' JUNE 2014 SAMPLING EVENT	SCALE AS SHOWN BLDG. NO.
DESIGNED BY T. D'IMEARA	DRAWN BY D. STEHLE	CHECKED BY S. MCBRYAN	PROJECT NUMBER GCIERPIAL
APPROVED BY G. ROACHE	DATE 06/24/14	SUPERVISOR R. GOSSELLER	PREPARED FOR Hoffmann-La Roche Inc. 340 KINGSLAND STREET NUTLEY, NEW JERSEY 07110-1199
DESIGN SUPERVISOR PROJECT ENGINEER		DRAWING NO. NR-STE-S29215-C1228	

FILE: \\wslr01m-fp2\p\proj\c1228\p\DESIGN\PROJECTS\15500\GTE\_WDE\_GROUND\_WATER\REPORT\FIGURES\ANNUAL\_REPORT\02\_2014\A-SEC\_DATE: 12/16/2014 11:49:56AM