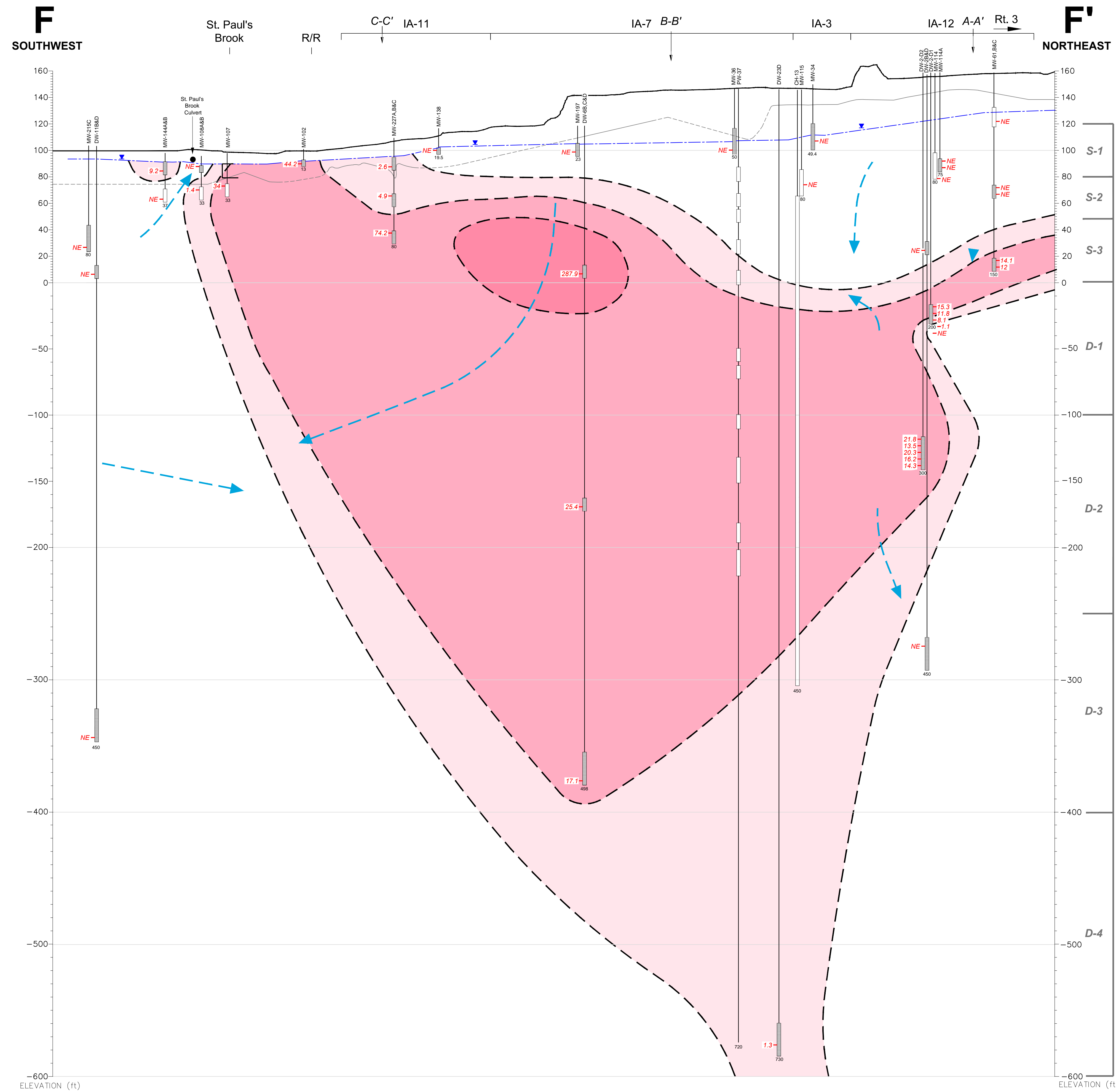
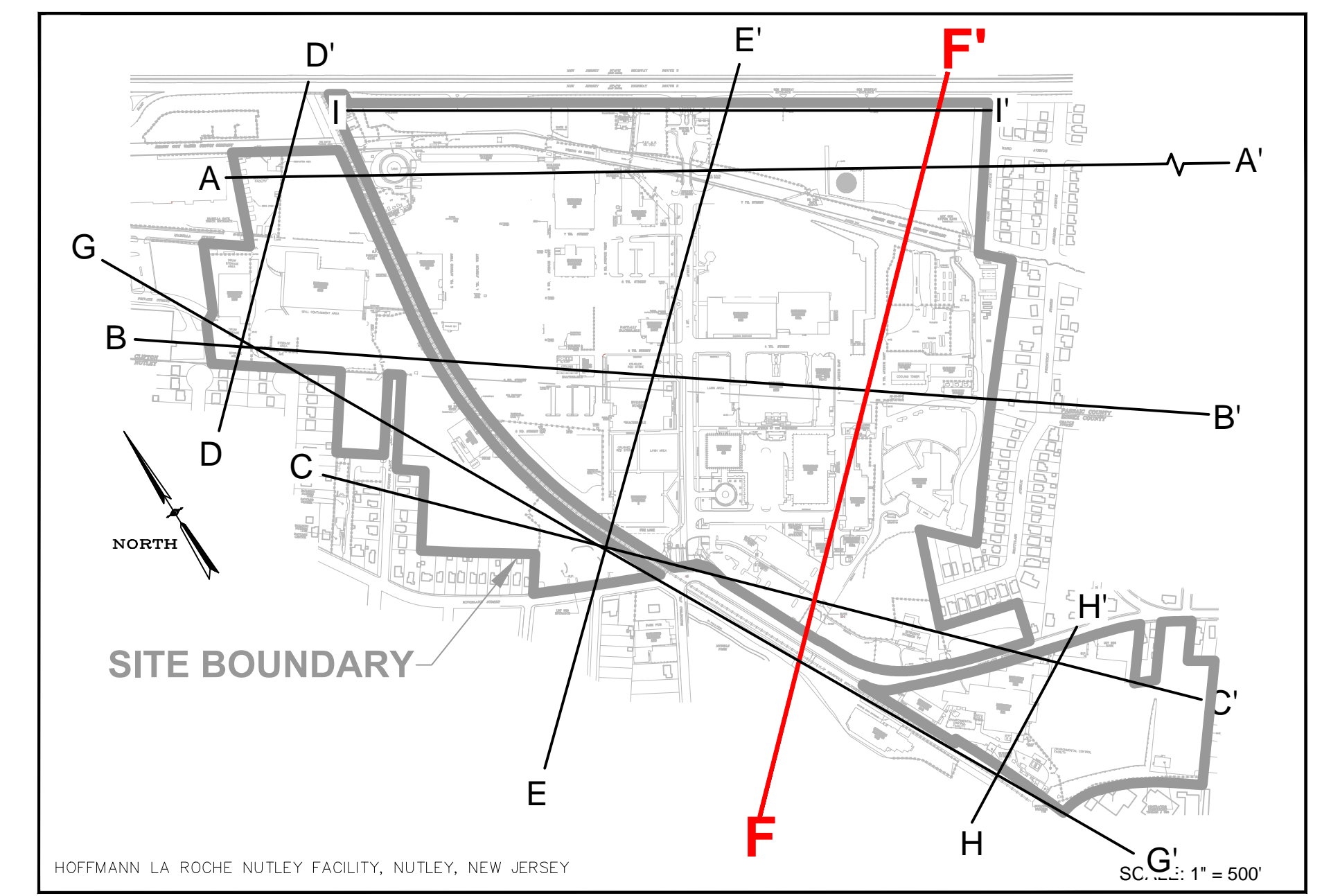
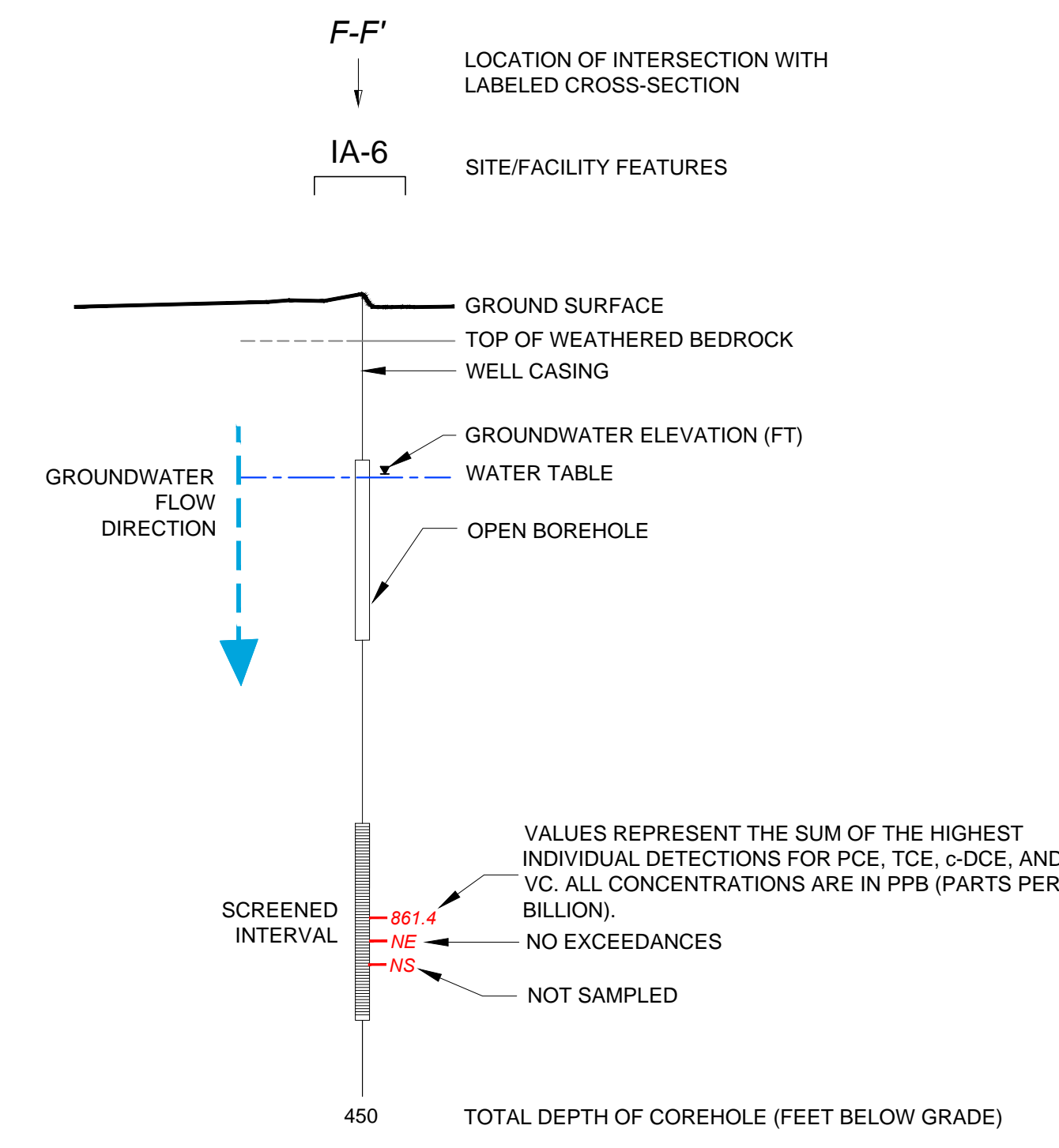


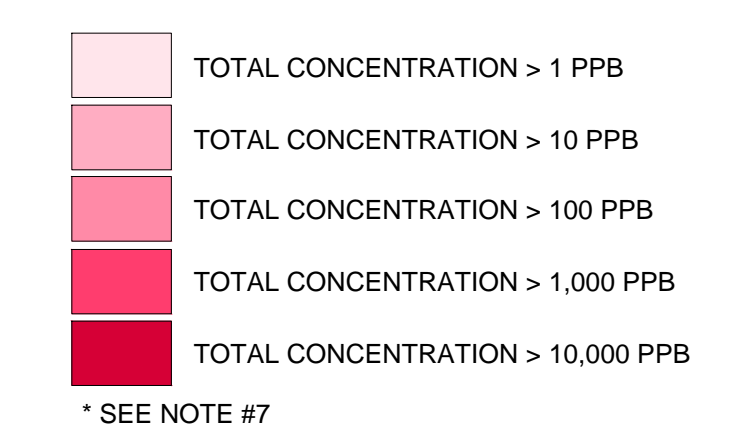
CROSS-SECTION LOCATION



LEGEND



ISOCONCENTRATION CONTOURS OF PCE AND BREAKDOWN PRODUCTS (TCE, C-DCE AND VC) >GWQS*



NOTES:

- COREHOLES HAVE BEEN SEALED WITH BLANK FLUTE LINERS.
- GROUND SURFACE IS BASED UPON THE SURFACE ELEVATION ALONG F-F'.
- SOME WELLS HAVE BEEN PROJECTED UP TO 300 FEET TO CONSTRUCT THIS VERTICAL SECTION AND ARE DISPLAYED AT ACTUAL SURVEYED ELEVATIONS.
- LITHOLOGIC CONTACTS ARE DASHED WHERE INFERRED.
- ELEVATION DATUM NAVD 1988; FEET ABOVE MEAN SEA LEVEL.
- R/R = RAILROAD.
- ONLY CVOCs DETECTED ABOVE NJDEP GROUND WATER QUALITY STANDARD (GWQS) ARE INCLUDED IN ISOCONCENTRATION CONTOURS.
- PW-37 SHOWN FOR LOCATION PURPOSES ONLY.
- PDB = PASSIVE DIFFUSION BAG.
- PCE = TETRACHLOROETHENE.
- TCE = TRICHLOROETHENE.
- c-DCE = CIS-1,2-DICHLOROETHENE.
- VC = VINYL CHLORIDE.

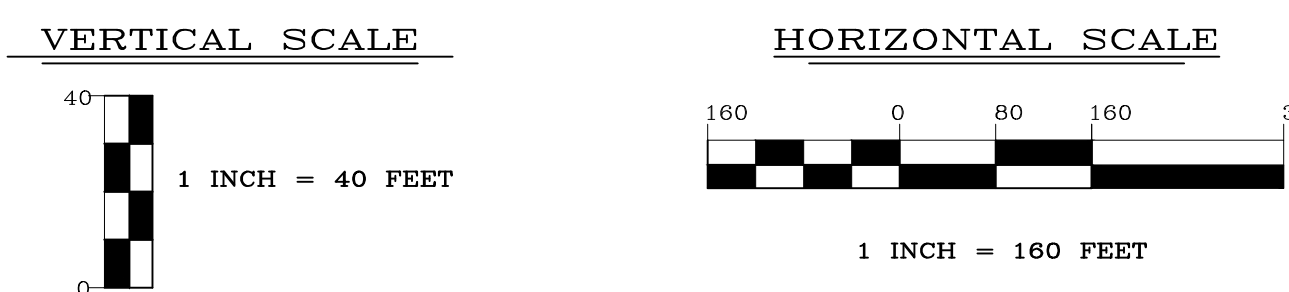
ENGINEER IN RESPONSIBLE CHARGE OF THE WORK SHOWN ON THIS DRAWING

DATE: _____ SIGNATURE: _____

PROFESSIONAL ENGINEER LIC. # _____

TRC

TRC ENVIRONMENTAL CORP.
41 SPRING STREET
NEW PROVIDENCE, NEW JERSEY 07974
908-988-1700



REV	DATE	BY	DESCRIPTION
1	10/01/14	DS	FINAL ANNUAL REPORT DRAFT ISSUED FOR REVIEW
0	06/24/14	DS	DRAFT ISSUED FOR REVIEW

DRAWING TITLE NUTLEY SITE REMEDIATION PROJECT	PROJECT TITLE FIGURE 01 CVOC DISTRIBUTION IN GROUNDWATER CROSS-SECTION F-F' JUNE 2014 SAMPLING EVENT	SCALE AS SHOWN BLDG. NO.
DESIGNER TJ O'MEARA	DRAWN BY D STEHLE	PROJECT NUMBER GCIERPIAL
CHECKED BY M JACOB	DATE 06/24/14	PROJECT ENGINEER GCIERPIAL
DESIGN SUPERVISOR LA ROCHE INC.	PROJECT ENGINEER LA ROCHE INC.	DRAWING NO. NR-STE-S29215-C1227
THIS DRAWING AND ALL INFORMATION THEREON IS THE PROPERTY OF HOFFMANN-LA ROCHE INC. AND IS CONFIDENTIAL AND MUST NOT BE MADE PUBLIC OR COPIED UNLESS AUTHORIZED BY ROCHE AND IS SUBJECT TO RETURN ON DEMAND.		PREPARED FOR Roche Hoffmann-La Roche Inc. 340 KINGSLAND STREET NUTLEY, NEW JERSEY 07110-1199