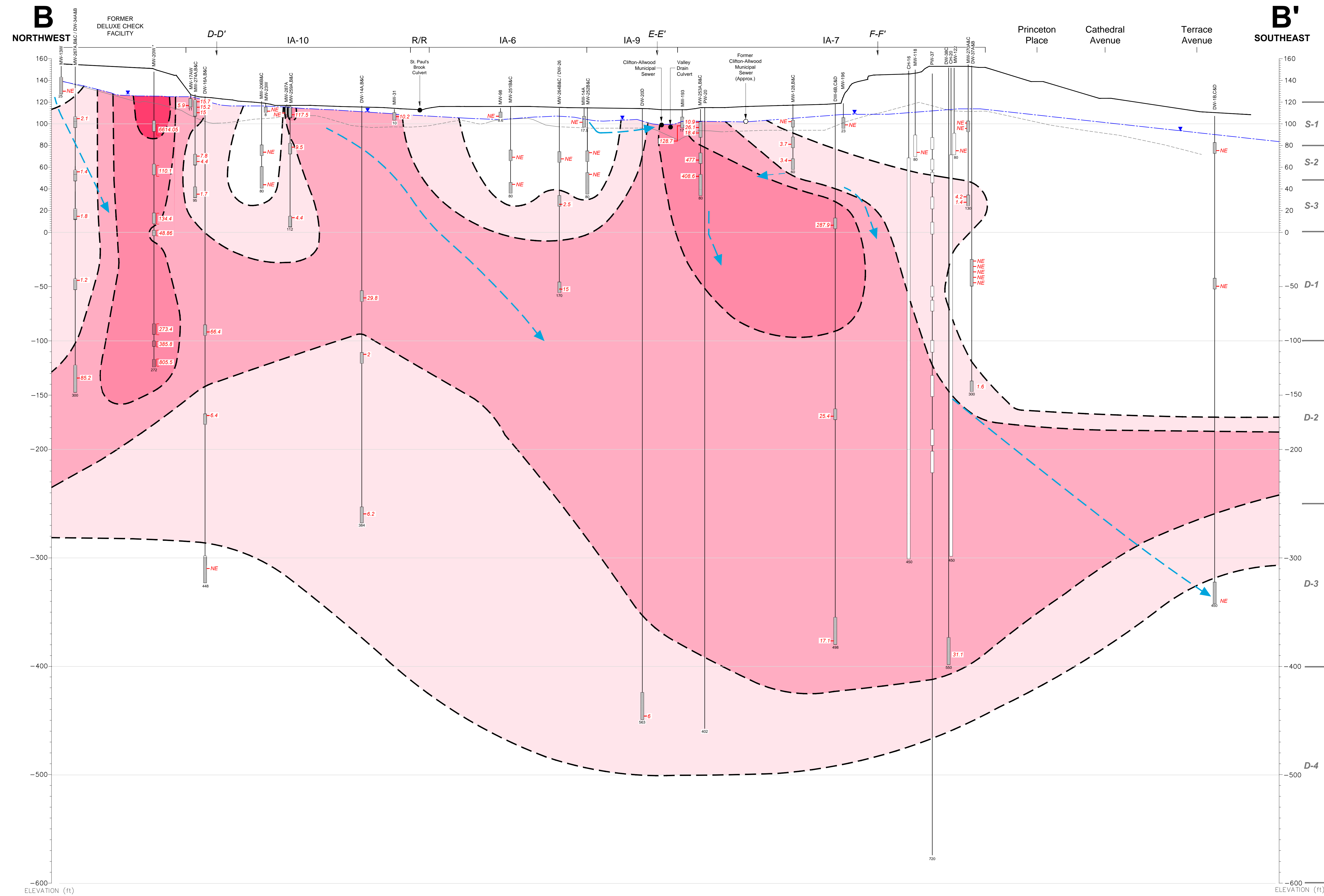
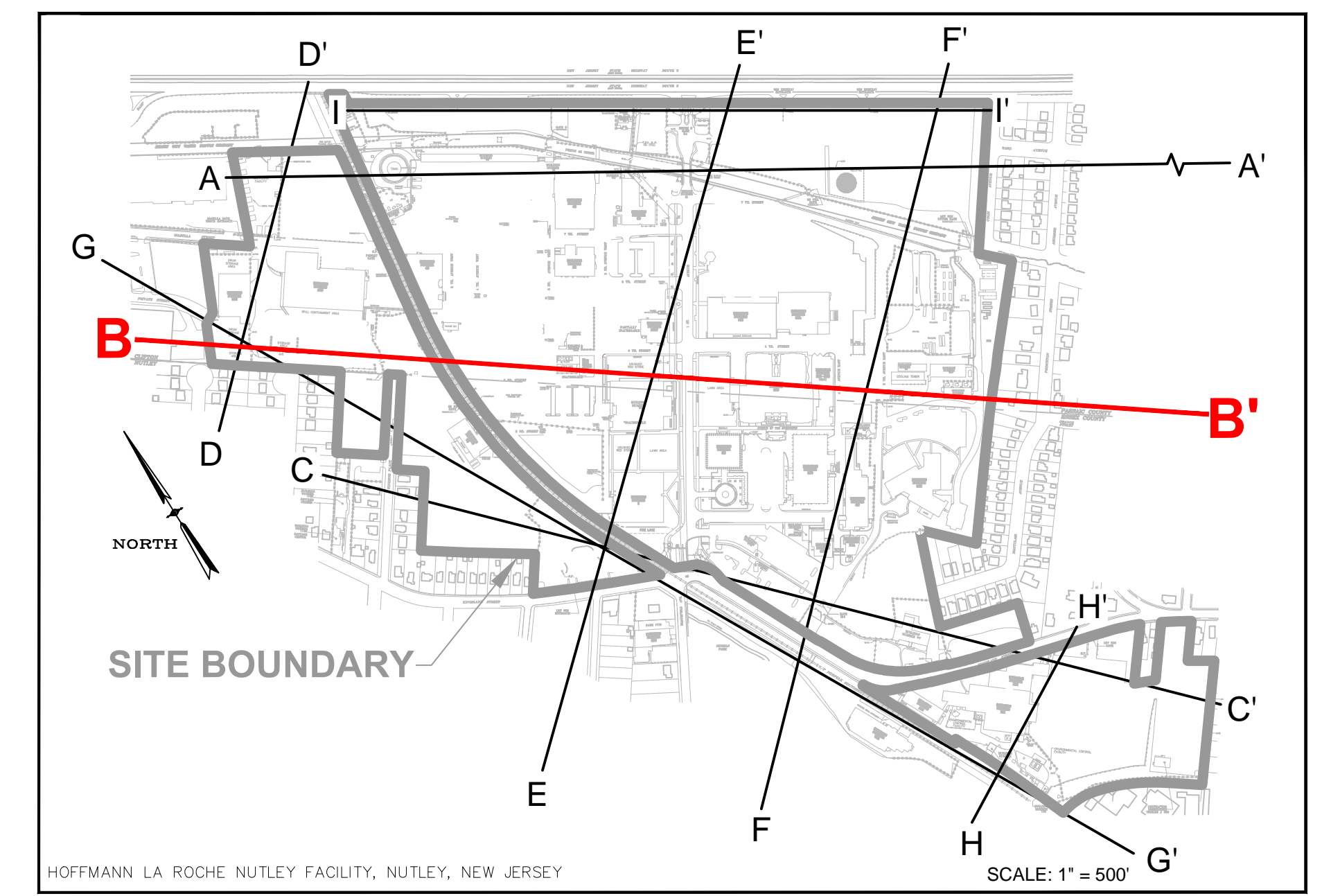
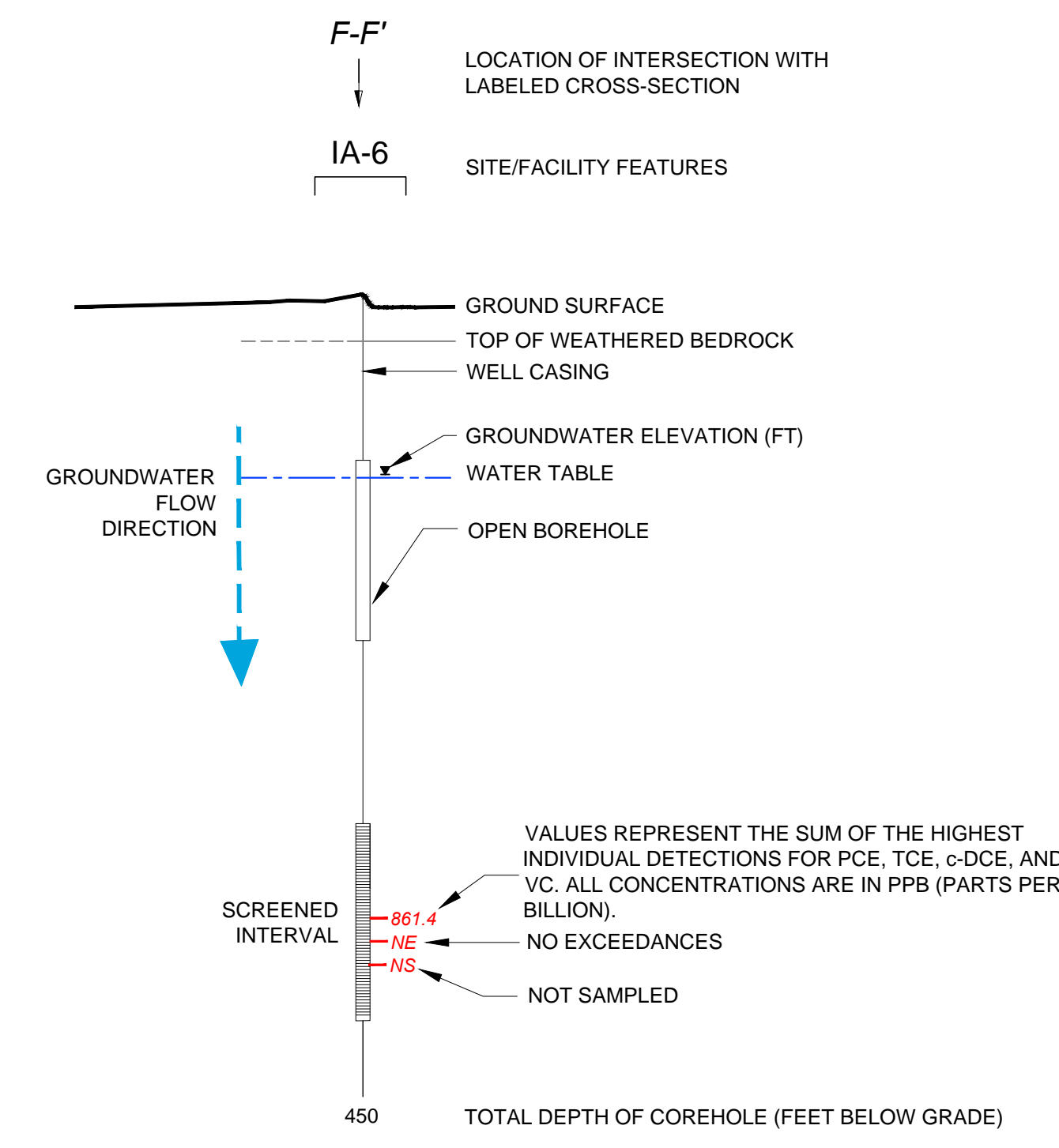


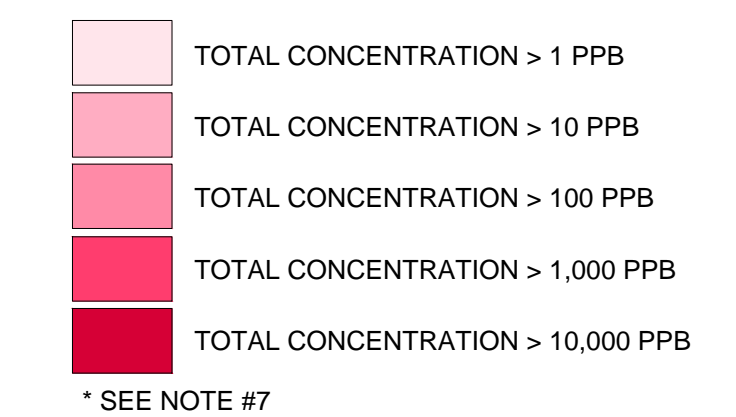
CROSS-SECTION LOCATION



LEGEND



ISOCONCENTRATION CONTOURS OF PCE AND BREAKDOWN PRODUCTS (TCE, C-DCE AND VC) >GWQS*

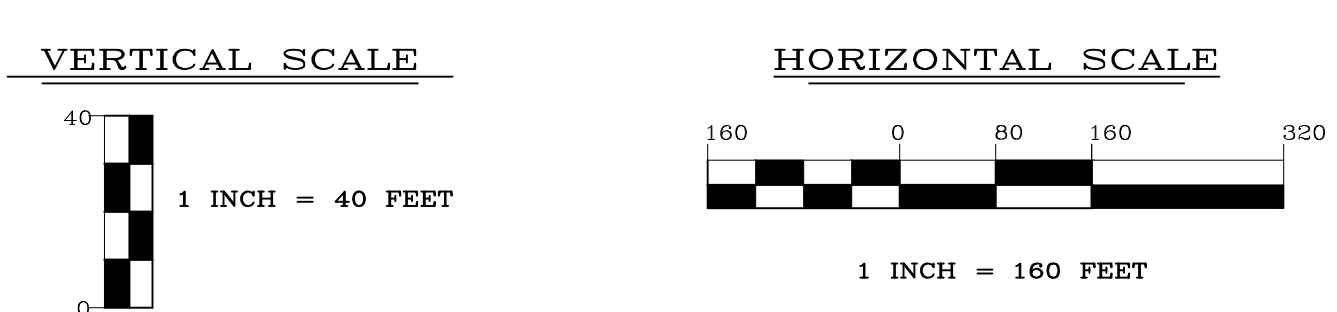


NOTES:

- COREHOLES HAVE BEEN SEALED WITH BLANK FLUTE LINERS.
- GROUND SURFACE IS BASED UPON THE SURFACE ELEVATION ALONG B-B', EXCEPT WEST OF MW-17AW WHERE THE GROUND SURFACE ELEVATION IS BASED UPON SURVEYED GROUND SURFACE AT WELL LOCATIONS.
- SOME WELLS HAVE BEEN PROJECTED UP TO 300 FEET TO CONSTRUCT THIS VERTICAL SECTION AND ARE DISPLAYED AT ACTUAL SURVEYED ELEVATIONS.
- LITHOLOGIC CONTACTS ARE DASHED WHERE INFERRED.
- ELEVATION DATUM NAVD 1988, FEET ABOVE MEAN SEA LEVEL.
- RR = RAILROAD.
- ONLY CVOCs DETECTED ABOVE NJDEP GROUND WATER QUALITY STANDARD (GWQS) ARE INCLUDED IN ISOCONCENTRATION CONTOURS.
- MW-20W WAS SAMPLED VIA LOW-FLOW IN MARCH AND APRIL 2013.
- PW-37 SHOWN FOR LOCATION PURPOSES ONLY.
- PDB = PASSIVE DIFFUSION BAG.
- PCE = TETRACHLOROETHENE.
- TCE = TRICHLOROETHENE.
- c-DCE = CIS-1,2-DICHLOROETHENE.
- VC = VINYL CHLORIDE.

ENGINEER IN RESPONSIBLE CHARGE OF THE WORK SHOWN ON THIS DRAWING
 DATE: _____ SIGNATURE: _____
 PROFESSIONAL ENGINEER LIC. # _____

TRC
 TRC ENVIRONMENTAL CORP.
 41 SPRING STREET
 NEW PROVIDENCE, NEW JERSEY 07974
 908-988-1700



| REV | DATE | BY | DESCRIPTION |
|-----|----------|----|---|
| 1 | 10/01/14 | DS | FINAL ANNUAL REPORT DRAFT ISSUED FOR REVIEW |
| 0 | 06/24/14 | DS | DRAFT ISSUED FOR REVIEW |

| | | |
|--|---|------------------------------------|
| DRAWING TITLE NUTLEY SITE REMEDIATION PROJECT | PROJECT TITLE FIGURE 78 CVOC DISTRIBUTION IN GROUNDWATER CROSS-SECTION B-B' JUNE 2014 SAMPLING EVENT | SCALE AS SHOWN |
| DESIGNED BY T. DICMARIA | DRAWN BY J. STEHLE | CHECKED BY S. MCCRAY |
| PROJECT SUPERVISOR G. CIERPIAL | PROJECT ENGINEER J. GIGELLER | DATE 6/24/14 |
| DESIGN SUPERVISOR LA ROCHE INC. | PROJECT ENGINEER LA ROCHE INC. | DRAWING NO. NR-STE-S29215-C1224 |

FILE: C:\USERS\ADMINISTRATOR\LOCAL VOLUME\PROJECTS\2165\196231_0000_205_01_00_DWG_2014_20 - UPDATED 2014-11-20.dwg, DATE: 12/15/2014 09:03:29P