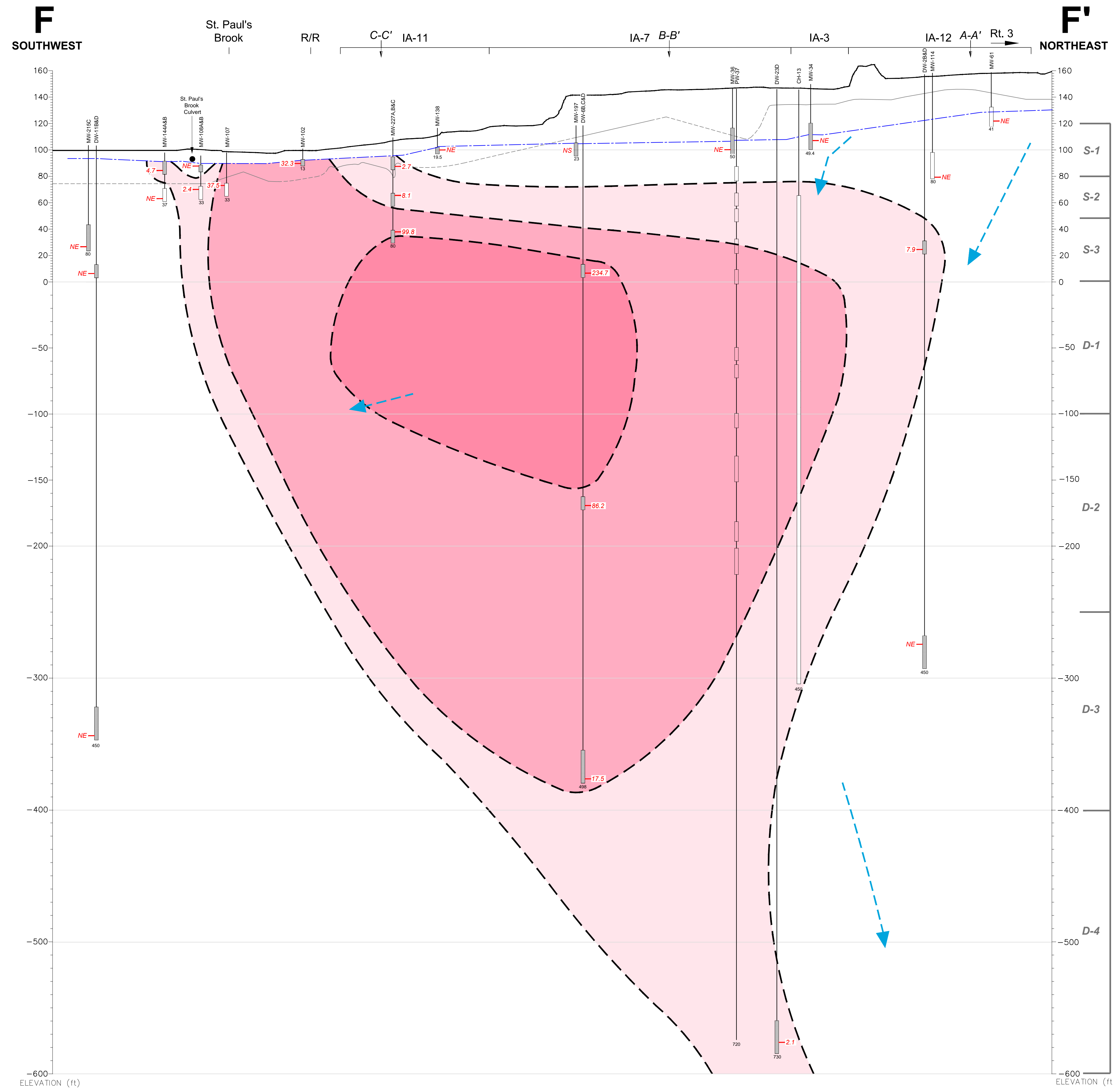
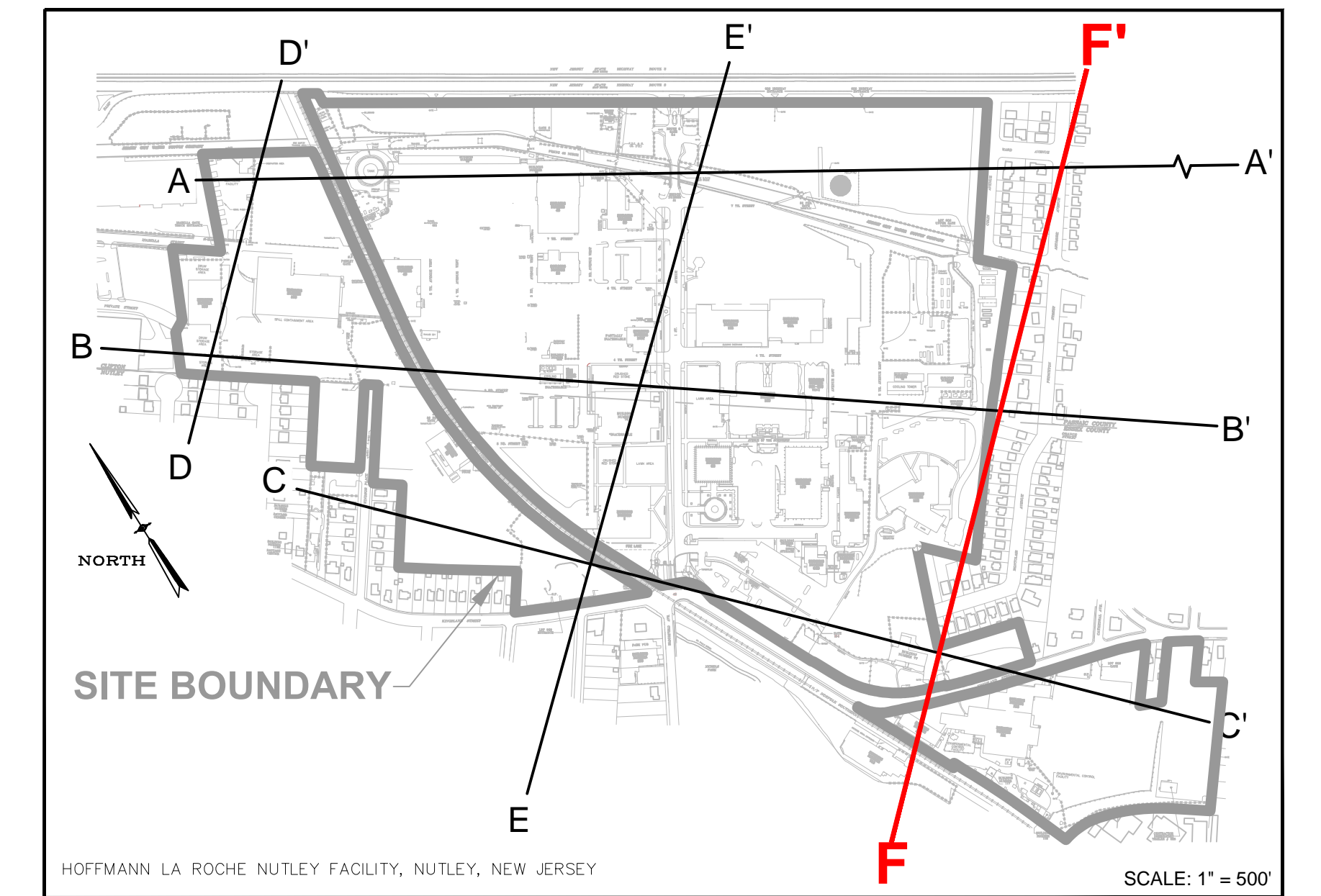
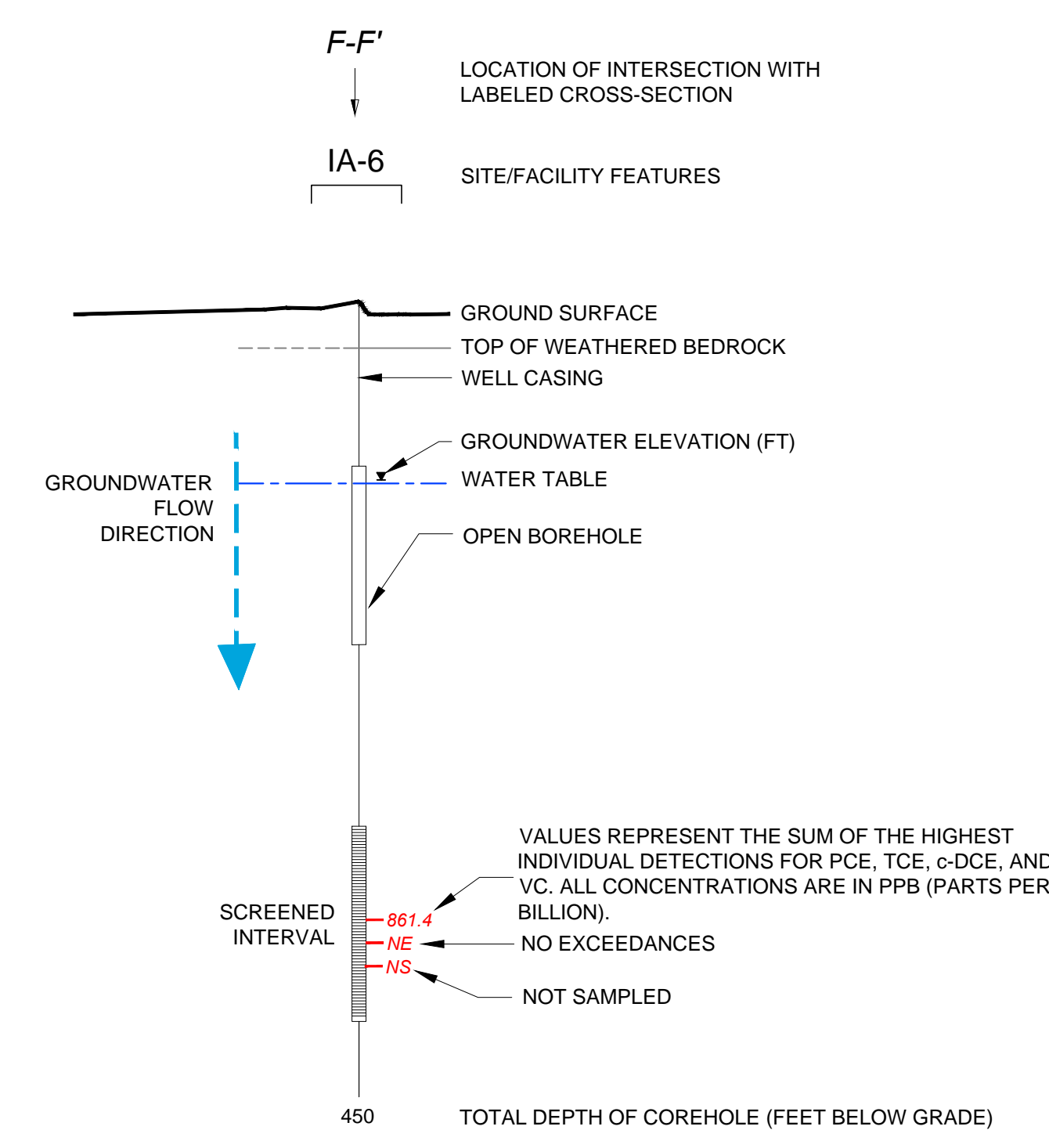


CROSS-SECTION LOCATION



LEGEND



ISOCONCENTRATION CONTOURS OF PCE AND BREAKDOWN PRODUCTS (TCE, C-DCE AND VC) >GWQS*

- TOTAL CONCENTRATION > 1 PPB
 - TOTAL CONCENTRATION > 10 PPB
 - TOTAL CONCENTRATION > 100 PPB
 - TOTAL CONCENTRATION > 1,000 PPB
 - TOTAL CONCENTRATION > 10,000 PPB
- * SEE NOTE #7

NOTES:

1. COREHOLES HAVE BEEN SEALED WITH BLANK FLUTE LINERS.
2. GROUND SURFACE IS BASED UPON THE SURFACE ELEVATION ALONG F-F'.
3. SOME WELLS HAVE BEEN PROJECTED UP TO 300 FEET TO CONSTRUCT THIS VERTICAL SECTION AND ARE DISPLAYED AT ACTUAL SURVEYED ELEVATIONS.
4. LITHOLOGIC CONTACTS ARE DASHED WHERE INFERRED.
5. ELEVATION DATUM NAVD 1988; FEET ABOVE MEAN SEA LEVEL.
6. R/R = RAILROAD.
7. ONLY CVOCs DETECTED ABOVE NJDEP GROUND WATER QUALITY STANDARD (GWQS) ARE INCLUDED IN ISOCONCENTRATION CONTOURS.
8. PW-37 SHOWN FOR LOCATION PURPOSES ONLY.
9. PDB = PASSIVE DIFFUSION BAG.
10. PCE = TETRACHLOROETHENE.
11. TCE = TRICHLOROETHENE.
12. c-DCE = CIS-1,2-DICHLOROETHENE.
13. VC = VINYL CHLORIDE.

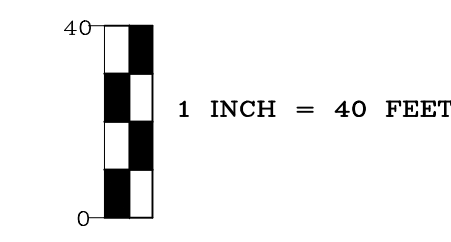
ENGINEER IN RESPONSIBLE CHARGE OF THE WORK SHOWN ON THIS DRAWING

DATE: _____ SIGNATURE: _____

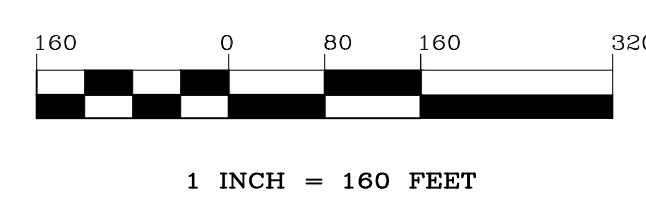
PROFESSIONAL ENGINEER LIC. # _____



VERTICAL SCALE



HORIZONTAL SCALE



REV	DATE	BY	DESCRIPTION
1	10/01/14	DS	FINAL ANNUAL REPORT DRAFT ISSUED FOR REVIEW
0	03/05/14	DS	DRAFT ISSUED FOR REVIEW

DRAWING TITLE	NUTLEY SITE REMEDIATION PROJECT	PROJECT TITLE	FIGURE 76 CVOC DISTRIBUTION IN GROUNDWATER CROSS-SECTION F-F' MARCH 2014 SAMPLING EVENT	SCALE	AS SHOWN
DATE	1/26/14	DESIGNED BY	MCCRAY	PROJECT NUMBER	GCIERPIAL
DRAWN BY	MCMEARA	CHECKED BY	MCMEARA	PREPARED FOR	Hoffmann-La Roche Inc.
PROJECT ENGINEER				DRAWING NO.	NR-STE-S29215-C1045

FILE: C:\USERS\ADMINISTRATOR\LOCAL TEMPORARY\PROJECTS\21651\19253 0000 205 01 00 DWG FILES 2014 10 26.DWG DATE: 12/10/2014 09:27:40PM