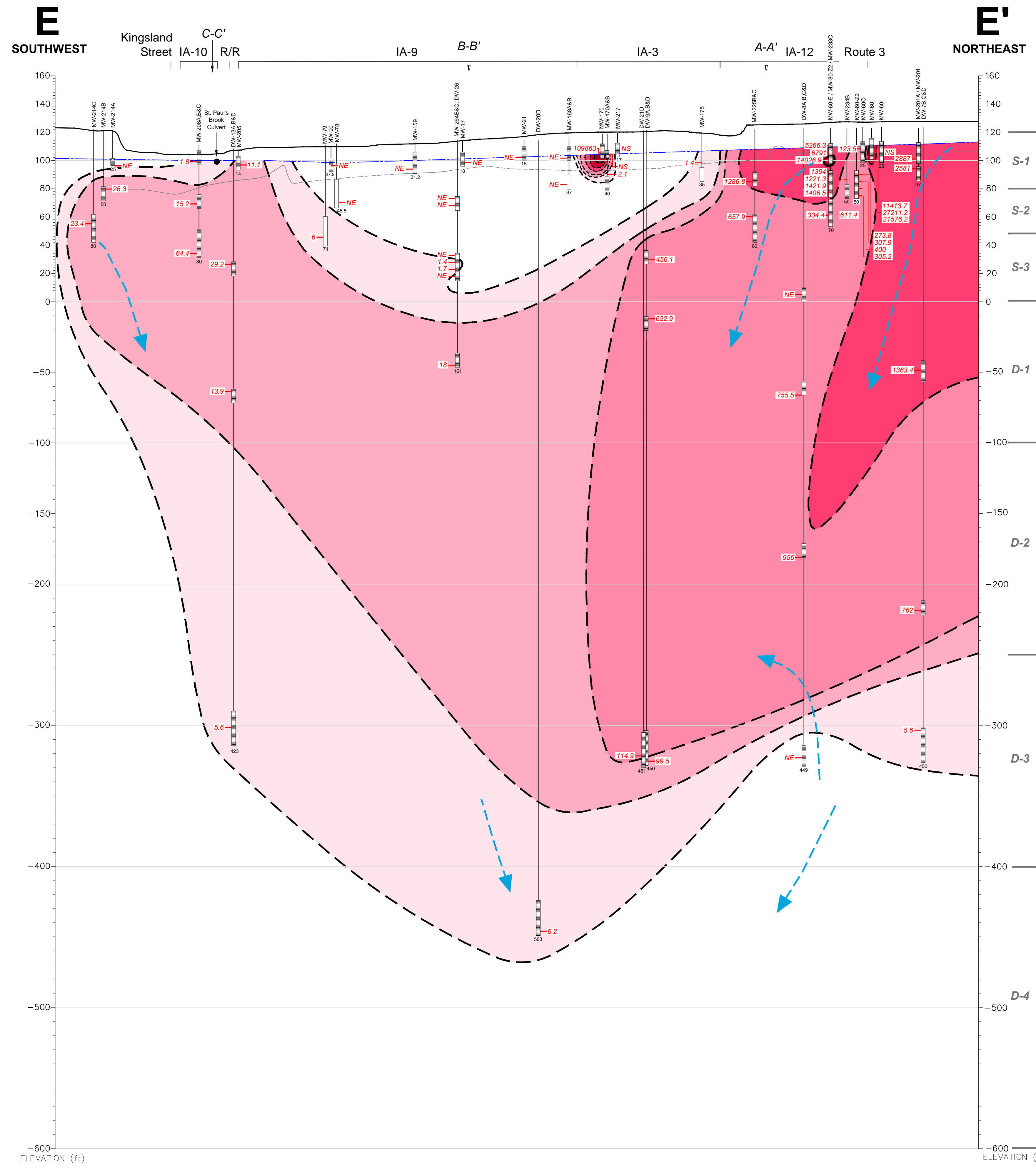
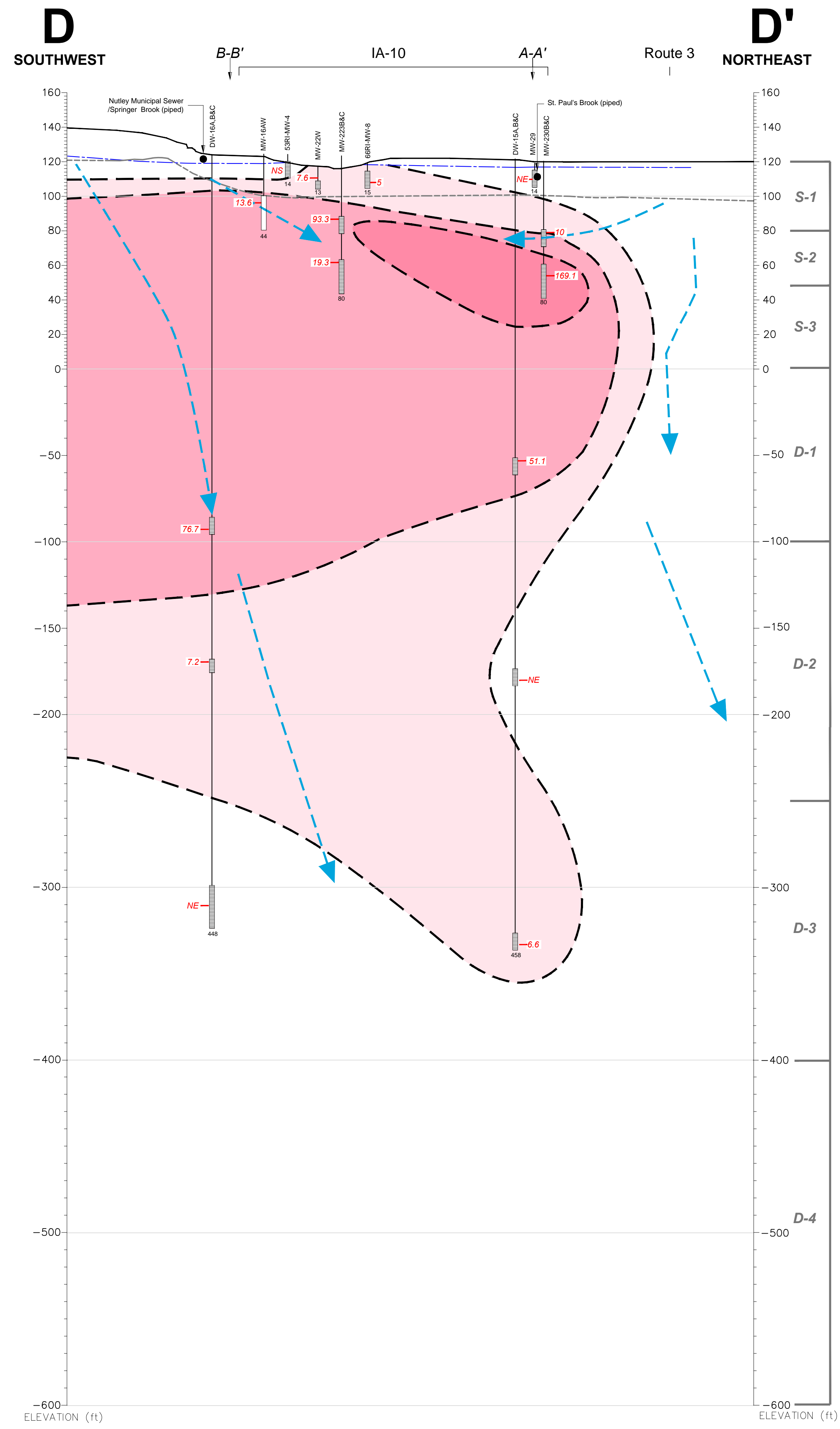
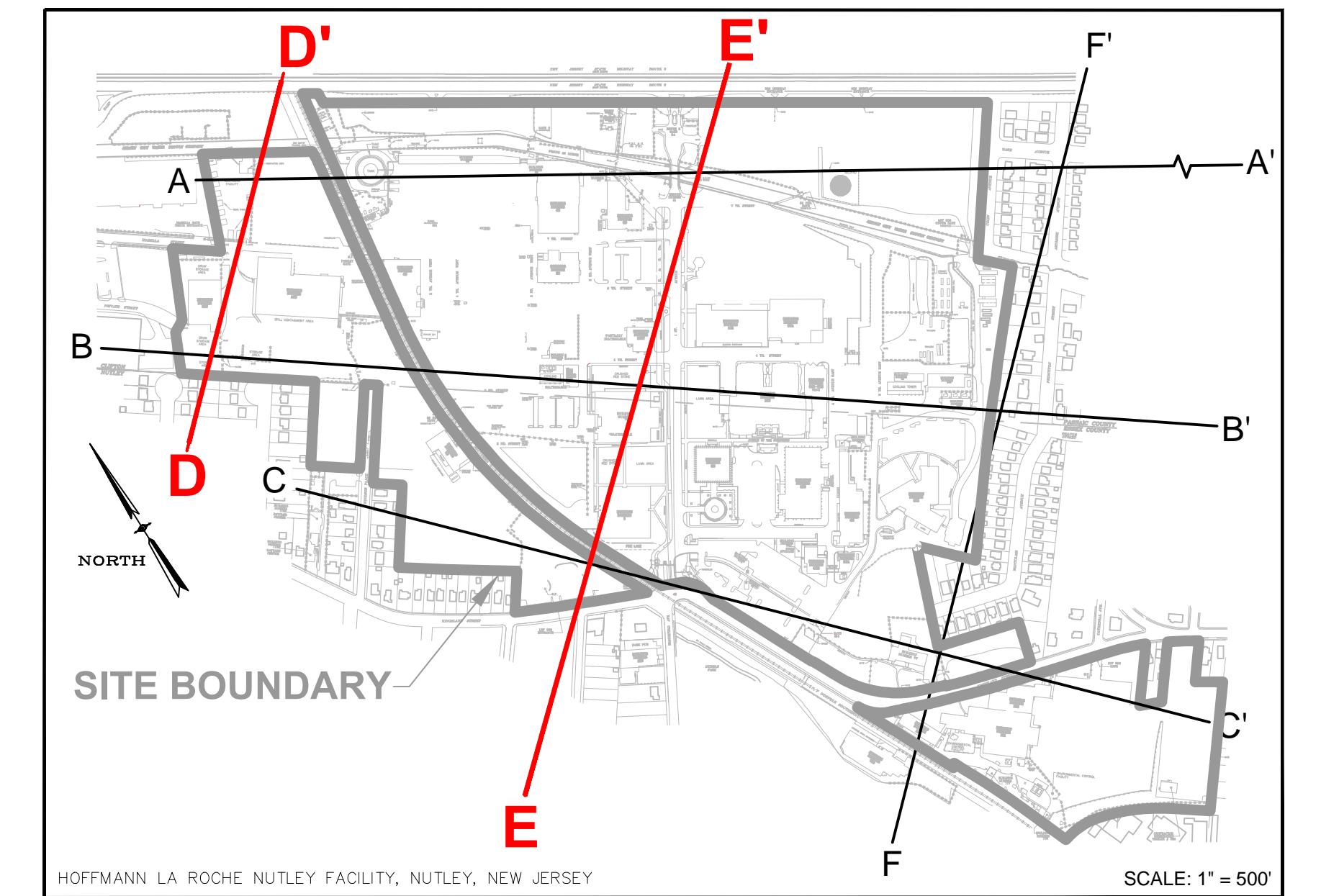
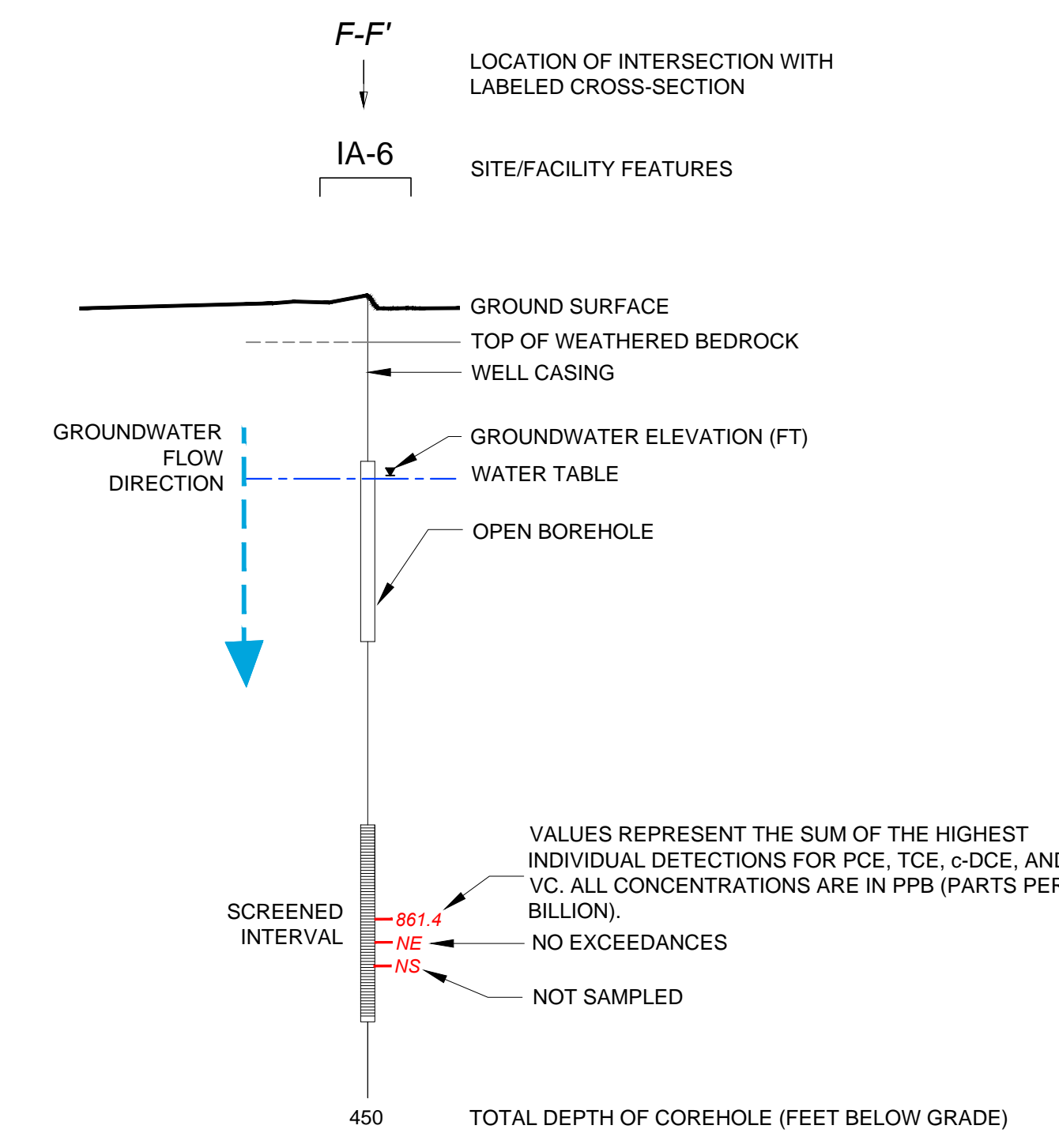


CROSS-SECTION LOCATION



LEGEND



ISOCONCENTRATION CONTOURS OF PCE AND BREAKDOWN PRODUCTS (TCE, C-DCE AND VC) >GWQS\*

- TOTAL CONCENTRATION > 1 PPB
- TOTAL CONCENTRATION > 10 PPB
- TOTAL CONCENTRATION > 100 PPB
- TOTAL CONCENTRATION > 1,000 PPB
- TOTAL CONCENTRATION > 10,000 PPB

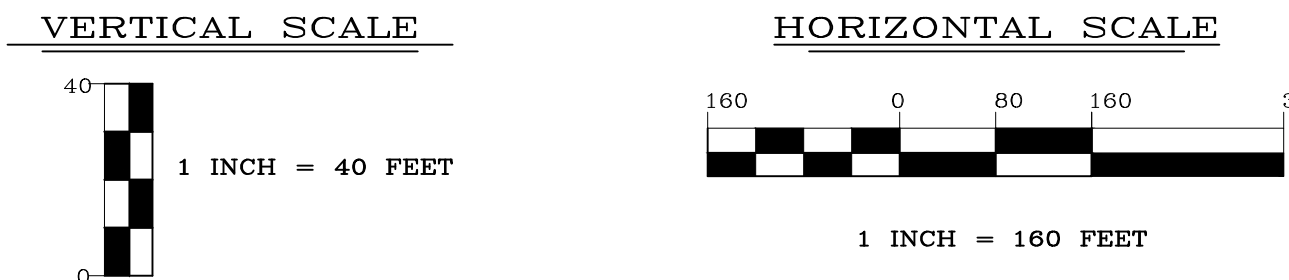
NOTES:

1. COREHOLES HAVE BEEN SEALED WITH BLANK FLUTE LINERS.
2. GROUND SURFACE IS BASED UPON THE SURFACE ELEVATION ALONG D-D' AND E-E'.
3. SOME WELLS HAVE BEEN PROJECTED UP TO 300 FEET TO CONSTRUCT THIS VERTICAL SECTION AND ARE DISPLAYED AT ACTUAL SURVEYED ELEVATIONS.
4. LITHOLOGIC CONTACTS ARE DASHED WHERE INFERRED.
5. ELEVATION DATUM NAVD 1988, FEET ABOVE MEAN SEA LEVEL.
6. RR = RAILROAD.
7. ONLY CVOCs DETECTED ABOVE NJDEP GROUND WATER QUALITY STANDARD (GWQS) ARE INCLUDED IN ISOCONCENTRATION CONTOURS.
8. PDB = PASSIVE DIFFUSION BAG.
9. PCE = TETRACHLOROETHENE.
10. TCE = TRICHLOROETHENE.
11. c-DCE = CIS-1,2-DICHLOROETHENE.
12. VC = VINYL CHLORIDE.

ENGINEER IN RESPONSIBLE CHARGE OF THE WORK SHOWN ON THIS DRAWING

DATE: \_\_\_\_\_ SIGNATURE: \_\_\_\_\_

PROFESSIONAL ENGINEER LIC. # \_\_\_\_\_



REV	DATE	BY	DESCRIPTION
1	10/01/14	DS	FINAL ANNUAL REPORT DRAFT ISSUED FOR REVIEW
0	03/05/14	DS	DRAFT ISSUED FOR REVIEW

DRAWING TITLE	NUTLEY SITE REMEDIATION PROJECT	SCALE	AS SHOWN
PROJECT NO.	NR-STE-S29215-C1044	BLDG. NO.	
DESIGNER	T. O'MEARA	CHECKED BY	B. STEBLE
DRAWN BY	T. O'MEARA	DATE	12/26/14
PROJECT SUPERVISOR	R. MCCRAY	PROJECT ENGINEER	G. CIERPAL
DESIGN ENGINEER	R. MCCRAY	PROJECT SUPERVISOR	G. CIERPAL

FILE: C:\Users\jgordon\My Documents\LOCAL\TEMP\PROJECTS\2014\116233 0000 205 01 10 DDC PLUMB 2014 102306.DWG DATE: 01/09/2015 04:49:30PM