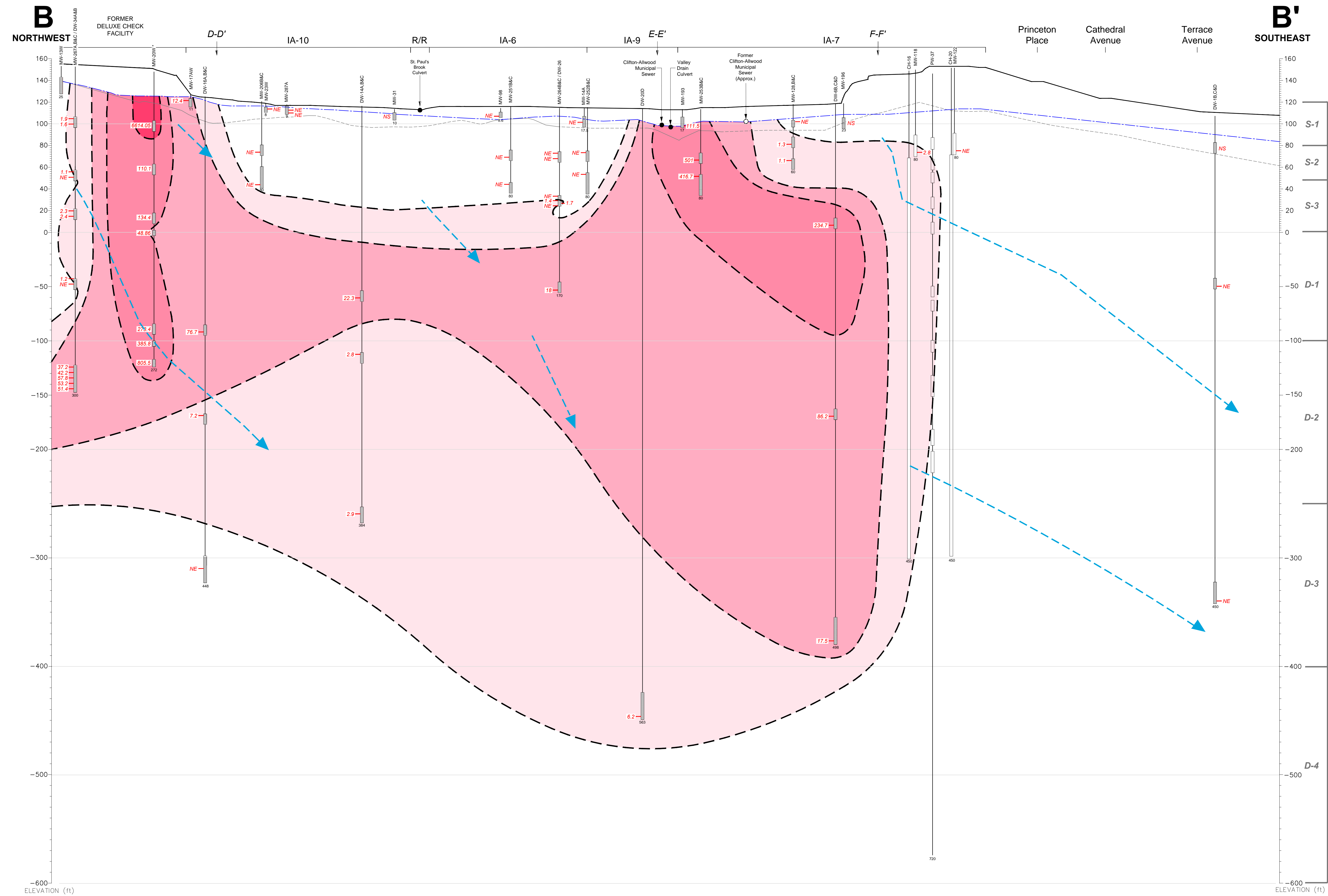
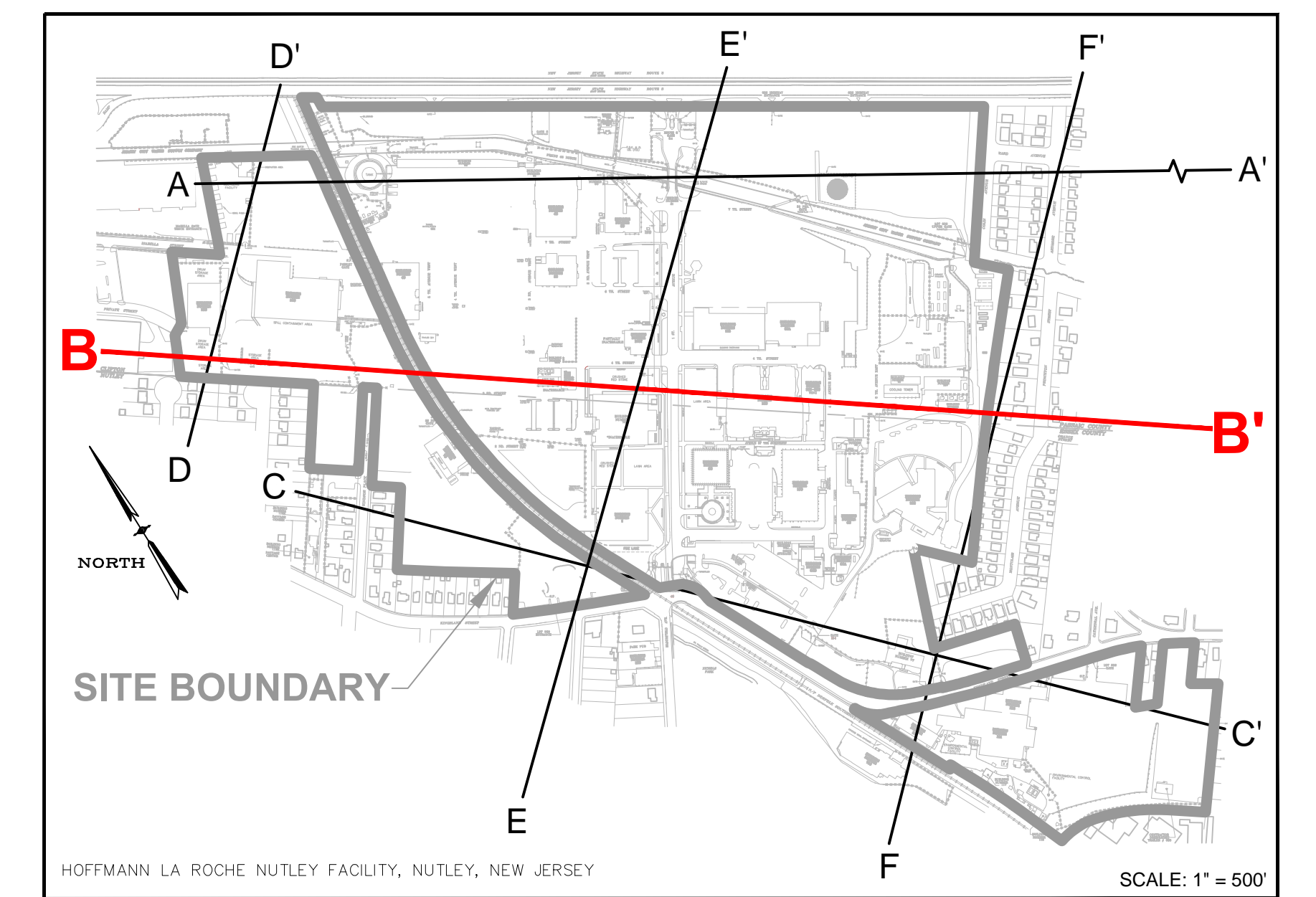
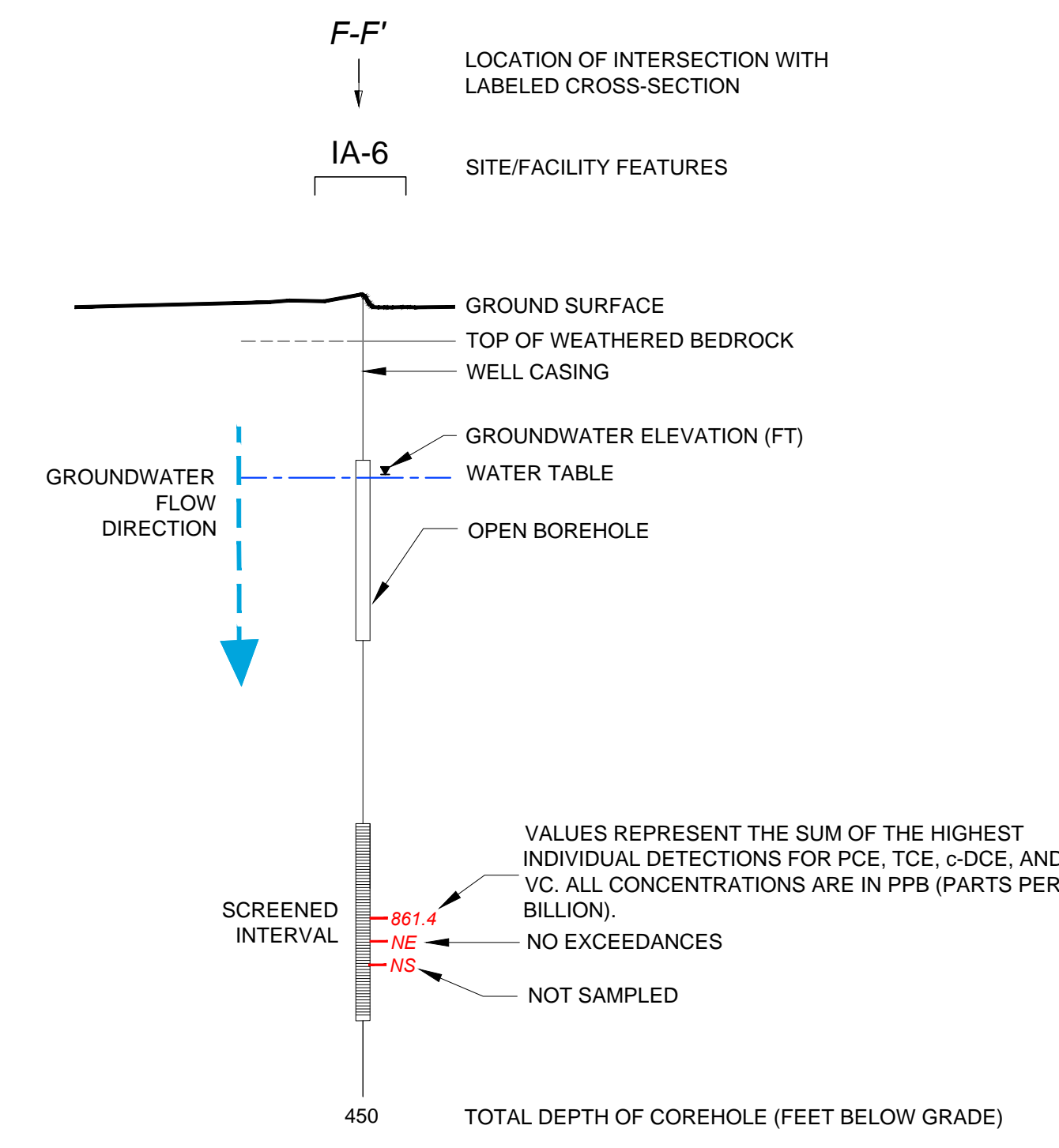


CROSS-SECTION LOCATION



LEGEND



ISOCONCENTRATION CONTOURS OF PCE AND BREAKDOWN PRODUCTS (TCE, C-DCE AND VC) >GWQS*

- TOTAL CONCENTRATION > 1 PPB
- TOTAL CONCENTRATION > 10 PPB
- TOTAL CONCENTRATION > 100 PPB
- TOTAL CONCENTRATION > 1,000 PPB
- TOTAL CONCENTRATION > 10,000 PPB

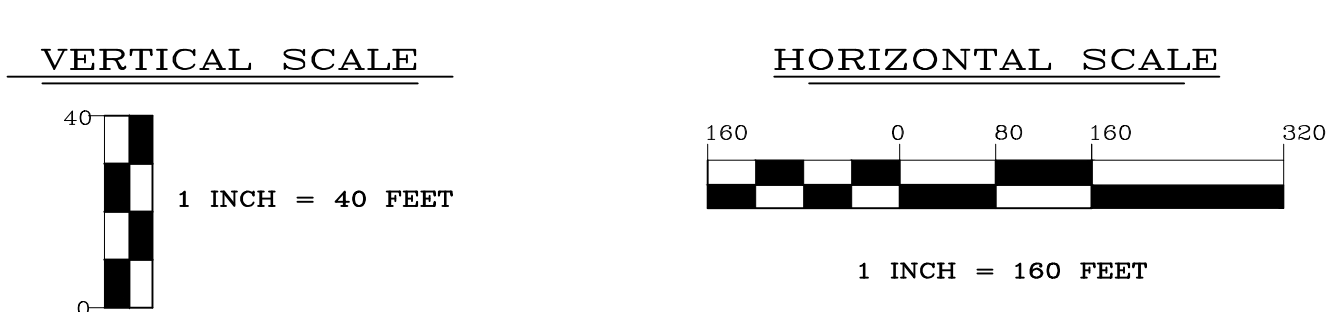
NOTES:

1. COREHOLES HAVE BEEN SEALED WITH BLANK FLUTE LINERS.
2. GROUND SURFACE IS BASED UPON THE SURFACE ELEVATION ALONG B-B', EXCEPT WEST OF MW-174V WHERE THE GROUND SURFACE ELEVATION IS BASED UPON SURVEYED GROUND SURFACE AT WELL LOCATIONS.
3. SOME WELLS HAVE BEEN PROJECTED UP TO 300 FEET TO CONSTRUCT THIS VERTICAL SECTION AND ARE DISPLAYED AT ACTUAL SURVEYED ELEVATIONS.
4. LITHOLOGIC CONTACTS ARE DASHED WHERE INFERRED.
5. ELEVATION DATUM NAVD 1988, FEET ABOVE MEAN SEA LEVEL.
6. RR = RAILROAD.
7. ONLY CVOCS DETECTED ABOVE NJDEP GROUND WATER QUALITY STANDARD (GWQS) ARE INCLUDED IN ISOCONCENTRATION CONTOURS.
8. MW-20W WAS SAMPLED VIA LOW-FLOW IN MARCH AND APRIL 2013.
9. PW-37 SHOWN FOR LOCATION PURPOSES ONLY.
10. POB = PASSIVE DIFFUSION BAG.
11. PCE = TETRACHLOROETHENE.
12. TCE = TRICHLOROETHENE.
13. C-DCE = CIS-1,2-DICHLOROETHENE.
14. VC = VINYL CHLORIDE.

ENGINEER IN RESPONSIBLE CHARGE OF THE WORK SHOWN ON THIS DRAWING

DATE: _____ SIGNATURE: _____

PROFESSIONAL ENGINEER LIC. # _____



REV	DATE	BY	DESCRIPTION
1	10/01/14	DS	FINAL ANNUAL REPORT DRAFT ISSUED FOR REVIEW
0	03/05/14	DS	DRAFT ISSUED FOR REVIEW

DRAWING TITLE NUTLEY SITE REMEDIATION PROJECT		PROJECT TITLE FIGURE 73 CVC DISTRIBUTION IN GROUNDWATER GEOLOGIC CROSS-SECTION B-B' Q1 2014 MARCH SAMPLING EVENT		SCALE AS SHOWN BLDG. NO.
DESIGNED BY T.D. MEARA	DRAWN BY D. STEPHLE	CHECKED BY S. MCCRAY	PROJECT NUMBER GCIERPIAL	PREPARED FOR Hoffmann-La Roche Inc. 340 KINGSLAND STREET NUTLEY, NEW JERSEY 07110-1199
DESIGN SUPERVISOR PROJECT ENGINEER			DRAWING NO. NR-STE-S29215-C1042	

FILE: C:\USERS\GREGOR\APPDATA\LOCAL\TEMP\APR08_216\196231_0000_205_01_XD_DOC\PLM05_2014_102366.DWG DATE: 12/10/2014 09:26:49PM