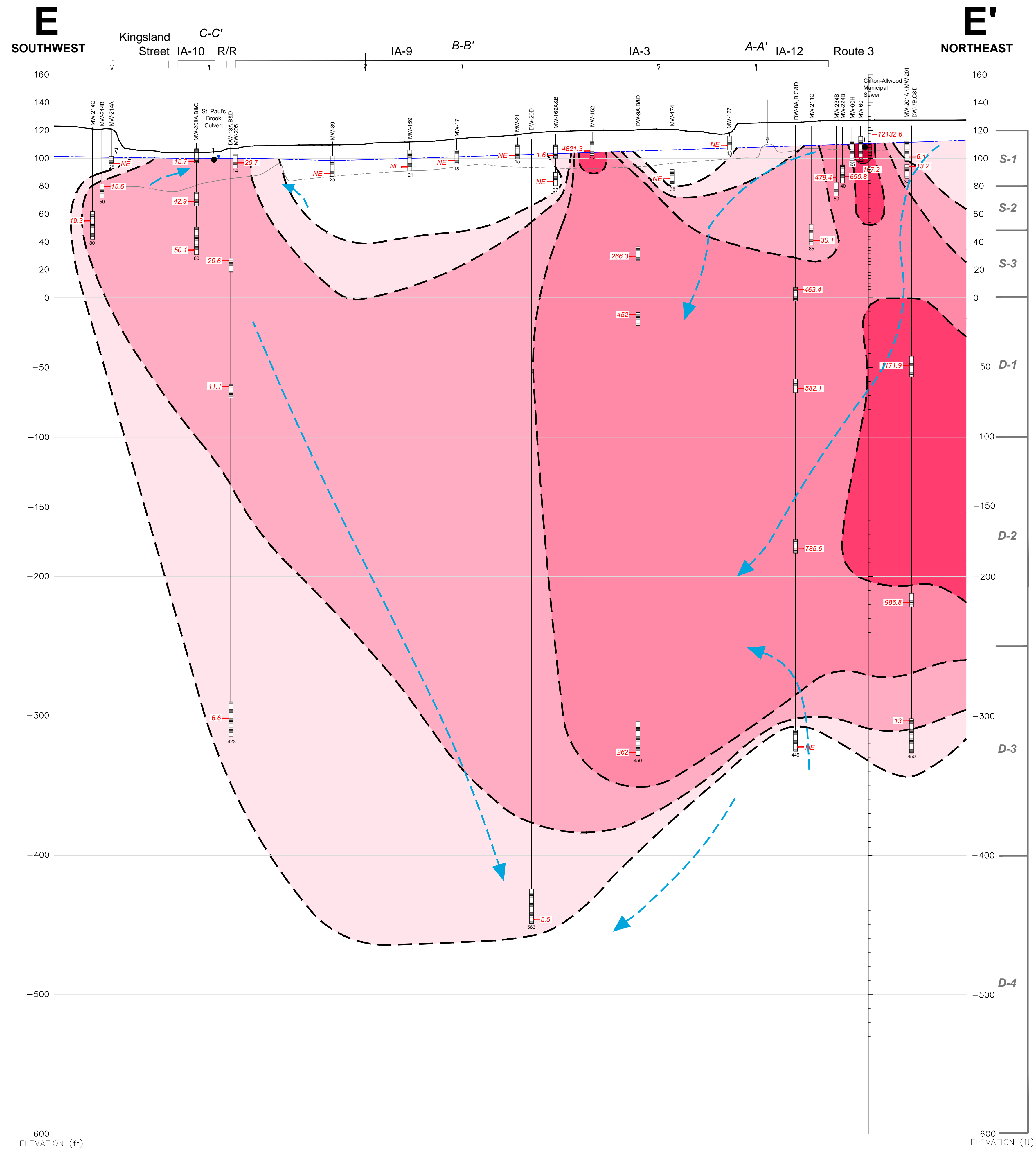
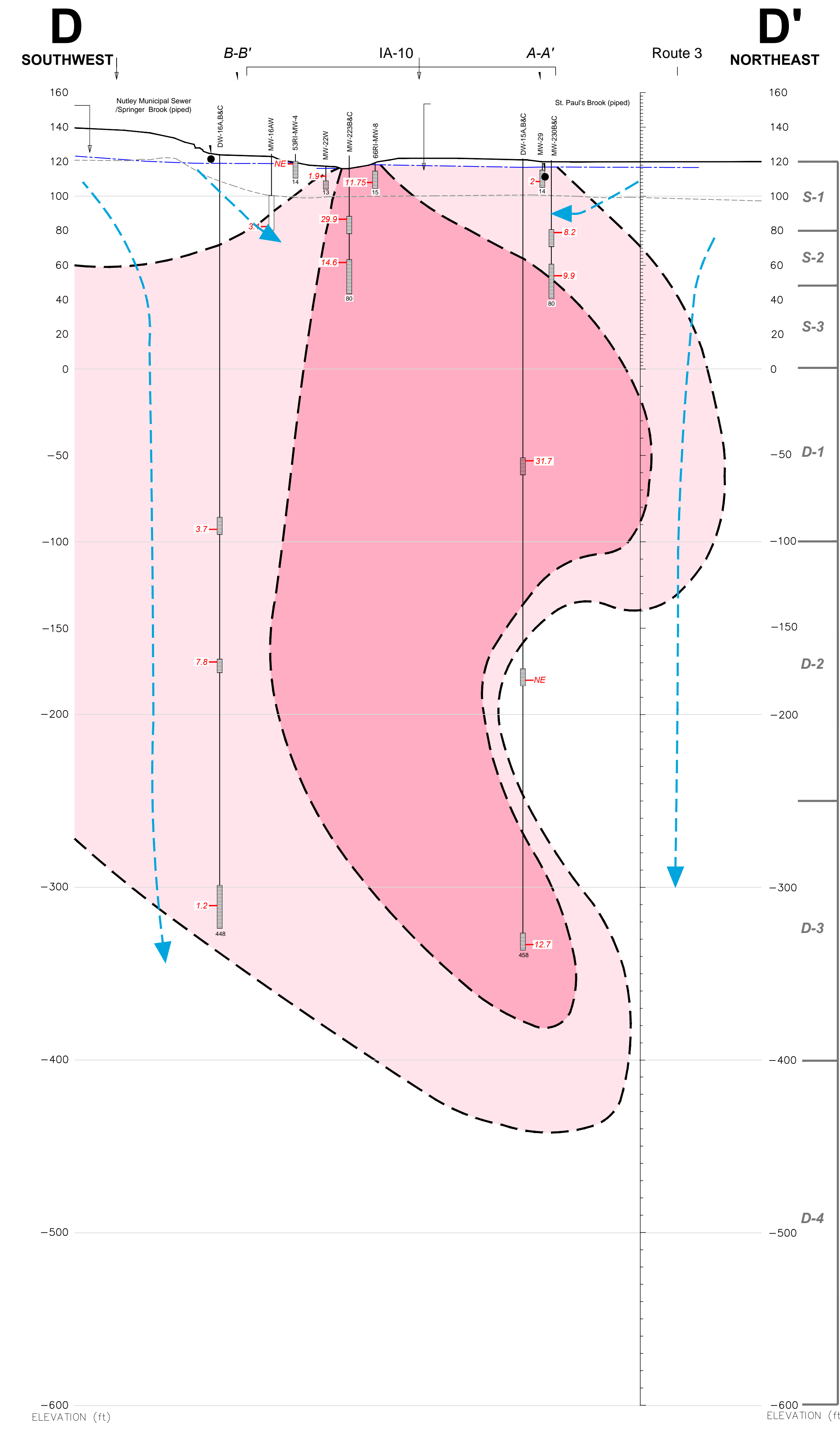
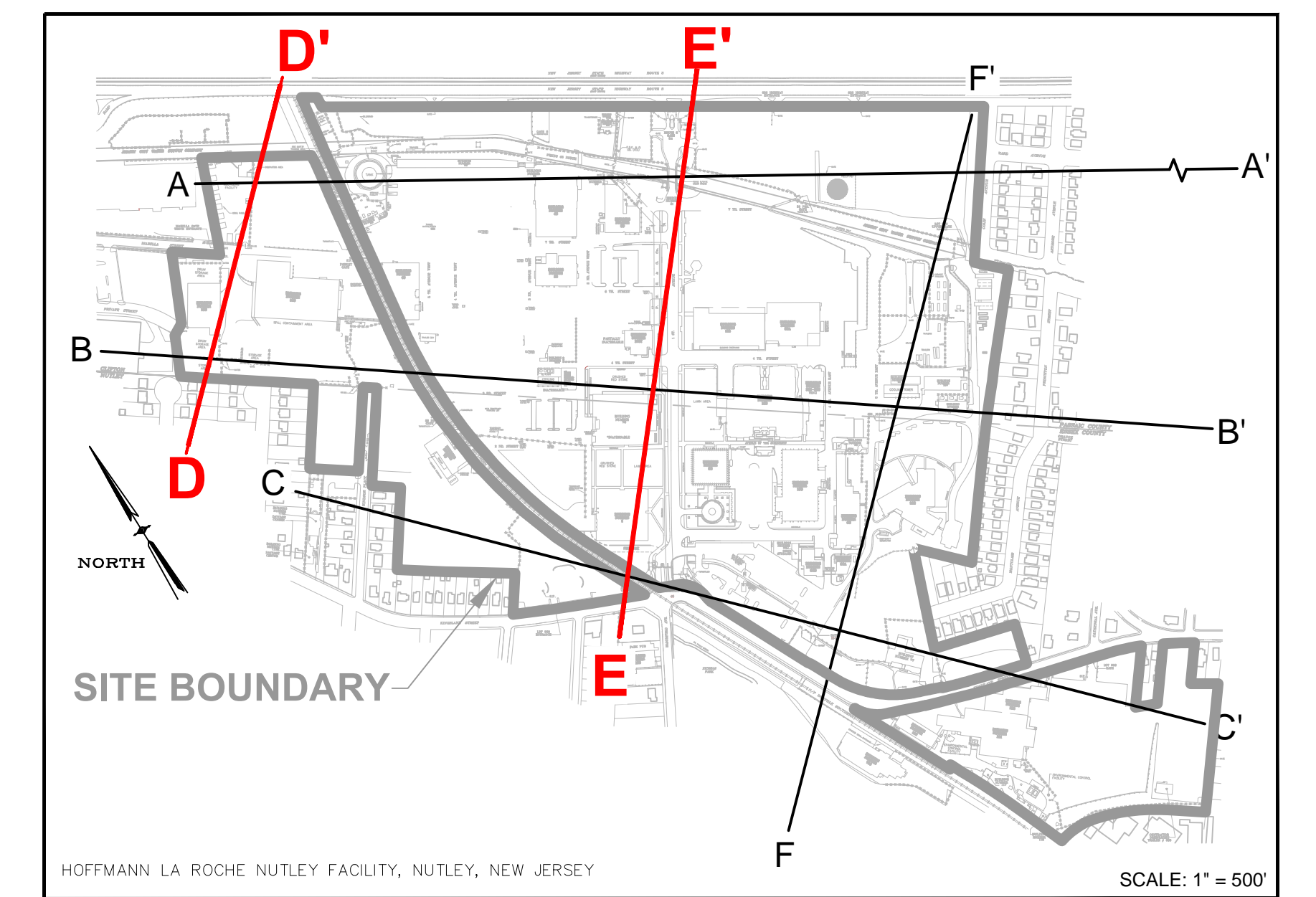
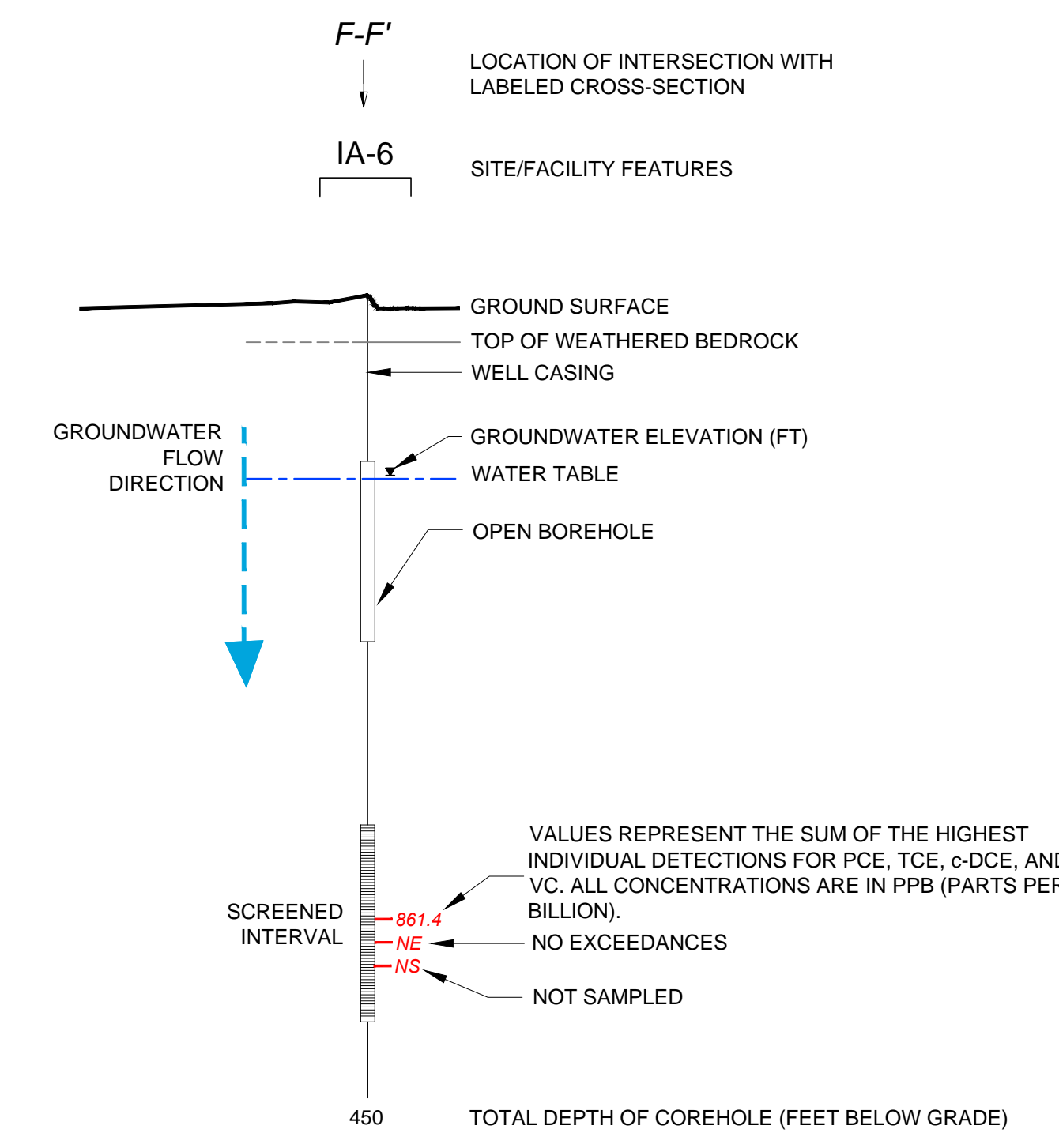


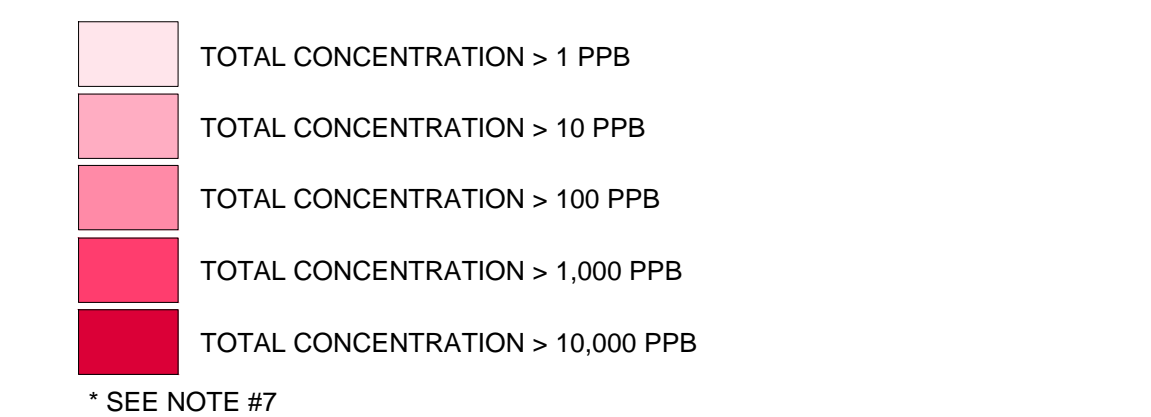
CROSS-SECTION LOCATION



LEGEND



ISOCONCENTRATION CONTOURS OF PCE AND BREAKDOWN PRODUCTS (TCE, C-DCE AND VC) >GWQS*

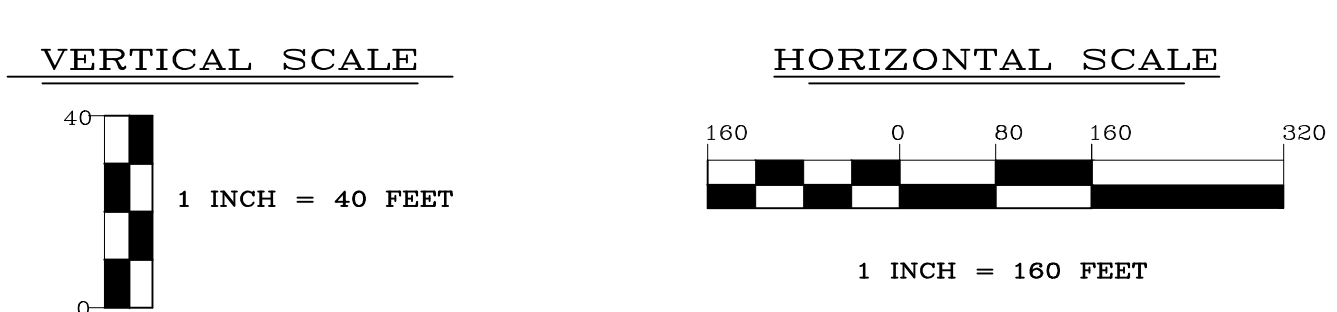


NOTES:

- COREHOLES HAVE BEEN SEALED WITH BLANK FLUTE LINERS.
- GROUND SURFACE IS BASED UPON THE SURFACE ELEVATION ALONG D-D' AND E-E'.
- SOME WELLS HAVE BEEN PROJECTED UP TO 300 FEET TO CONSTRUCT THIS VERTICAL SECTION AND ARE DISPLAYED AT ACTUAL SURVEYED ELEVATIONS.
- LITHOLOGIC CONTACTS ARE DASHED WHERE INFERRED.
- ELEVATION DATUM NAVD 1988, FEET ABOVE MEAN SEA LEVEL.
- RR = RAILROAD.
- ONLY CVOCs DETECTED ABOVE NJDEP GROUND WATER QUALITY STANDARD (GWQS) ARE INCLUDED IN ISOCONCENTRATION CONTOURS.
- PDB = PASSIVE DIFFUSION BAG.
- PCE = TETRACHLOROETHENE.
- TCE = TRICHLOROETHENE.
- c-DCE = CIS-1,2-DICHLOROETHENE.
- VC = VINYL CHLORIDE.

ENGINEER IN RESPONSIBLE CHARGE OF THE WORK SHOWN ON THIS DRAWING
 DATE: _____ SIGNATURE: _____
 PROFESSIONAL ENGINEER LIC. # _____

TRC
 TRC ENVIRONMENTAL CORP.
 41 SPRING STREET
 NEW PROVIDENCE, NEW JERSEY 07974
 908-988-1700



REV	DATE	BY	DESCRIPTION
1	09/30/14	DS	FINAL ANNUAL REPORT DRAFT ISSUED FOR REVIEW
0	02/28/14	DS	DRAFT ISSUED FOR REVIEW

DRAWING TITLE	NUTLEY SITE REMEDIATION PROJECT	PROJECT TITLE	FIGURE 70 CVOC DISTRIBUTION IN GROUNDWATER CROSS-SECTION D-D' & E-E' DECEMBER 2013 SAMPLING EVENT	SCALE	AS SHOWN
DATE	02/17/14	DRAWN BY	T.D. MEARA	BLDG. NO.	
DESIGN SUPERVISOR	D. STEHLE	CHECKED BY	J. MCCRAY	PROJECT NUMBER	
PROJECT ENGINEER	J. STEHLE	APPROVED BY	G. CIERPIAL	DRAWING NO.	NR-STE-S29215-C984
THIS DRAWING AND ALL INFORMATION THEREON IS THE PROPERTY OF HOFFMANN-LA ROCHE INC. AND IS CONFIDENTIAL AND MUST NOT BE MADE PUBLIC OR COPIED UNLESS AUTHORIZED BY ROCHE AND IS SUBJECT TO RETURN ON DEMAND.		Hoffmann-La Roche Inc. 340 KINGSLAND STREET NUTLEY, NEW JERSEY 07110-1199			