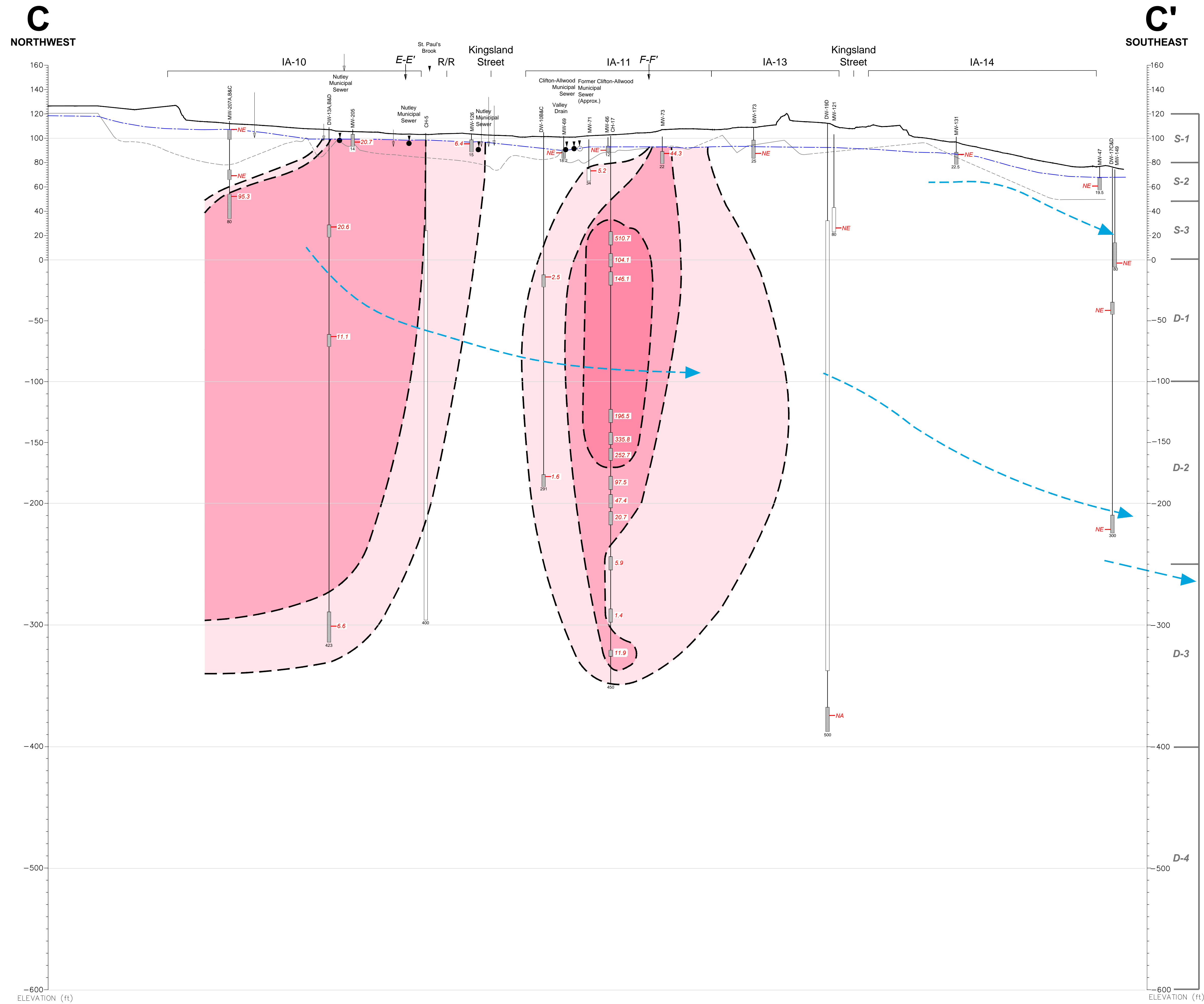
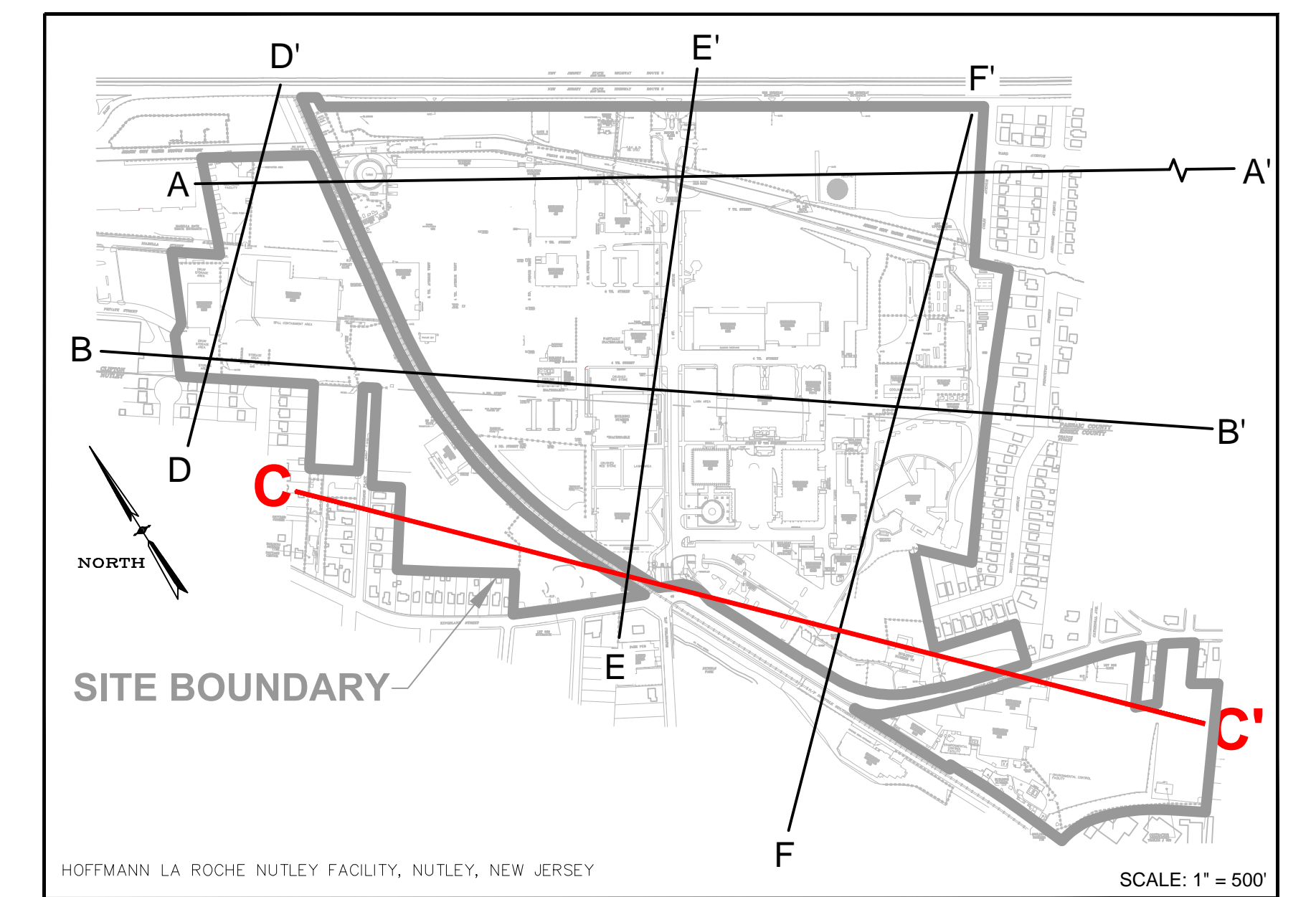
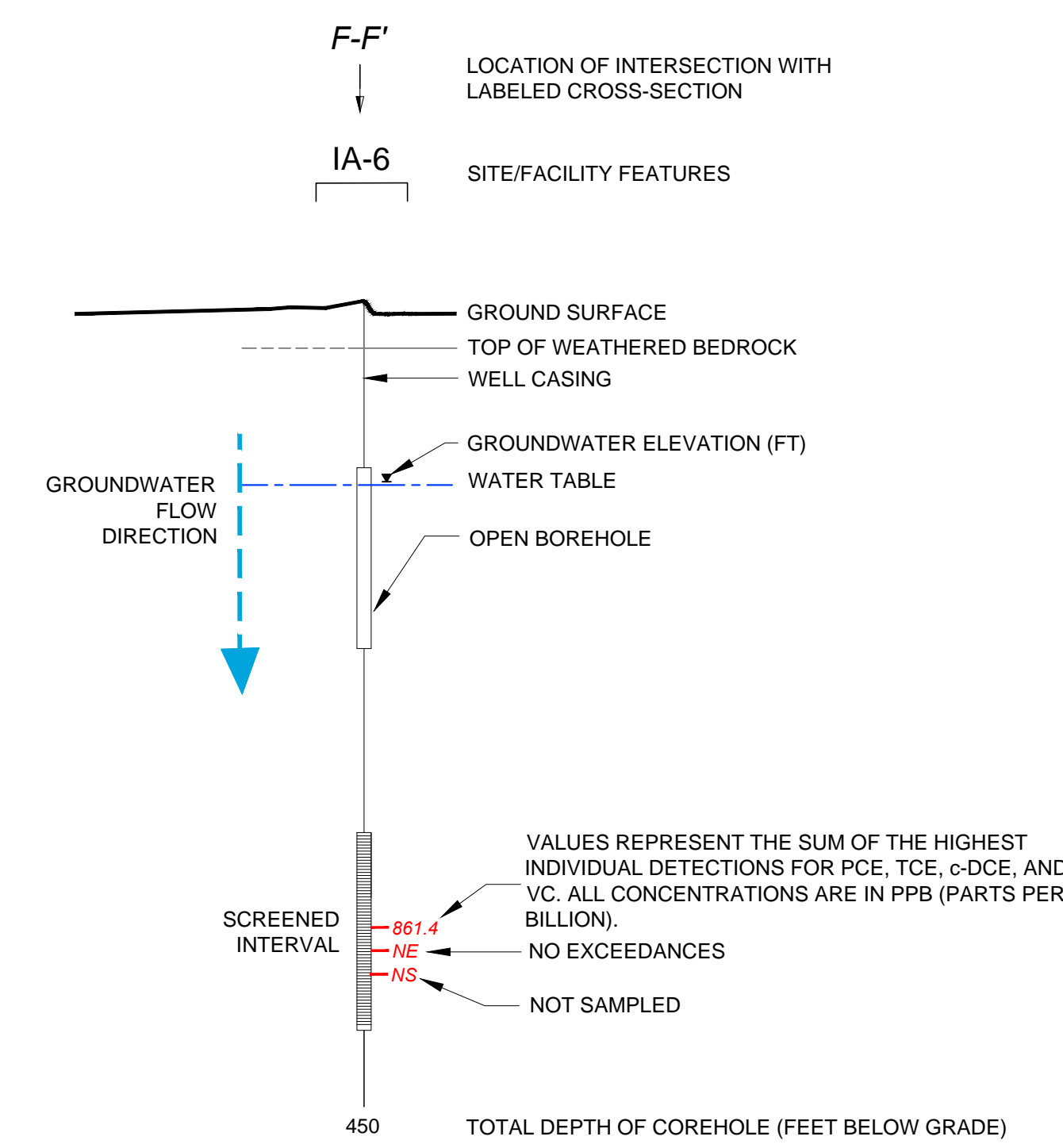


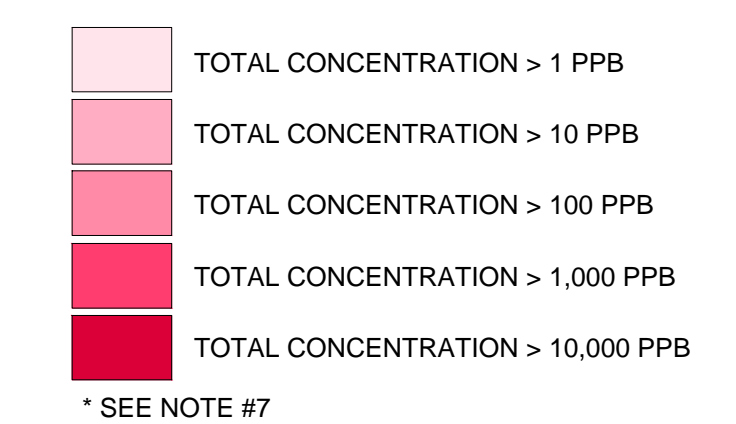
CROSS-SECTION LOCATION



LEGEND



ISOCONCENTRATION CONTOURS OF PCE AND BREAKDOWN PRODUCTS (TCE, C-DCE AND VC) >GWQS*



NOTES:

- COREHOLES HAVE BEEN SEALED WITH BLANK FLUTE LINERS.
- GROUND SURFACE IS BASED UPON THE SURFACE ELEVATION ALONG C-C'.
- SOME WELLS HAVE BEEN PROJECTED UP TO 300 FEET TO CONSTRUCT THIS VERTICAL SECTION AND ARE DISPLAYED AT ACTUAL SURVEYED ELEVATIONS.
- LITHOLOGIC CONTACTS ARE DASHED WHERE INFERRED.
- ELEVATION DATUM NAVD 1988; FEET ABOVE MEAN SEA LEVEL.
- R/R = RAILROAD.
- ONLY CVQCS DETECTED ABOVE NJDEP GROUND WATER QUALITY STANDARD (GWQS) ARE INCLUDED IN ISOCONCENTRATION CONTOURS.
- CH-17 WAS SAMPLED VIA LOW-FLOW.
- PDB = PASSIVE DIFFUSION BAG.
- PCE = TETRACHLOROETHENE.
- TCE = TRICHLOROETHENE.
- c-DCE = CIS-1,2-DICHLOROETHENE.
- VC = VINYL CHLORIDE.

ENGINEER IN RESPONSIBLE CHARGE OF THE WORK SHOWN ON THIS DRAWING
DATE: _____ SIGNATURE: _____
PROFESSIONAL ENGINEER: _____ LIC. # _____

TRC
TRC ENVIRONMENTAL CORP.
41 SPRING STREET
NEW PROVIDENCE, NEW JERSEY 07974
908-988-1700



REV	DATE	BY	DESCRIPTION
1	09/30/14	DS	FINAL ANNUAL REPORT DRAFT ISSUED FOR REVIEW
0	02/28/14	DS	DRAFT ISSUED FOR REVIEW

DRAWING TITLE NUTLEY SITE REMEDIATION PROJECT	PROJECT TITLE FIGURE 69 CVQC DISTRIBUTION IN GROUNDWATER CROSS-SECTION C-C'	SCALE AS SHOWN BLDG. NO.
DESIGN SUPERVISOR T.O. MEARA	DESIGNER D. STEHLE	PROJECT NUMBER GCIERP1AL
PROJECT ENGINEER S. RICCIARDO	CHECKER S. RICCIARDO	DATE 02/27/14
DESIGNER S. RICCIARDO	PROJECT ENGINEER S. RICCIARDO	PREPARED FOR Hoffmann-La Roche Inc. 340 KINGSLAND STREET NUTLEY, NEW JERSEY 07110-1199
DRAWING NO. NR-STE-S29215-C983		

FILE: C:\SERIES\GPR\NEW\APP\DATA\LOCAL\TEMP\APR\BPLT\154\196233 0000 205 01.XD.DWG PLIMS 2013 02.28.14 DATE: 12/10/2014 09:30:20PM