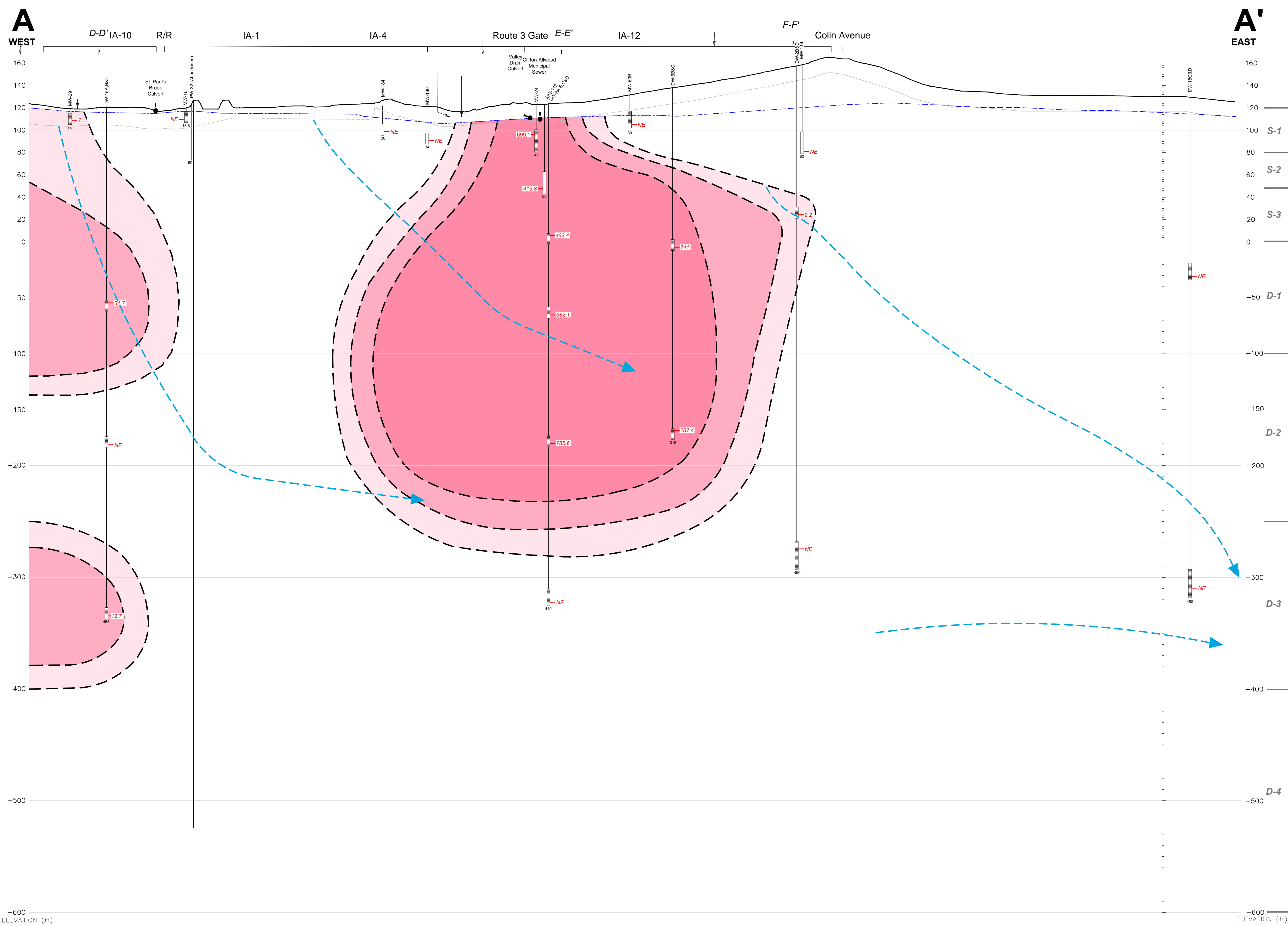
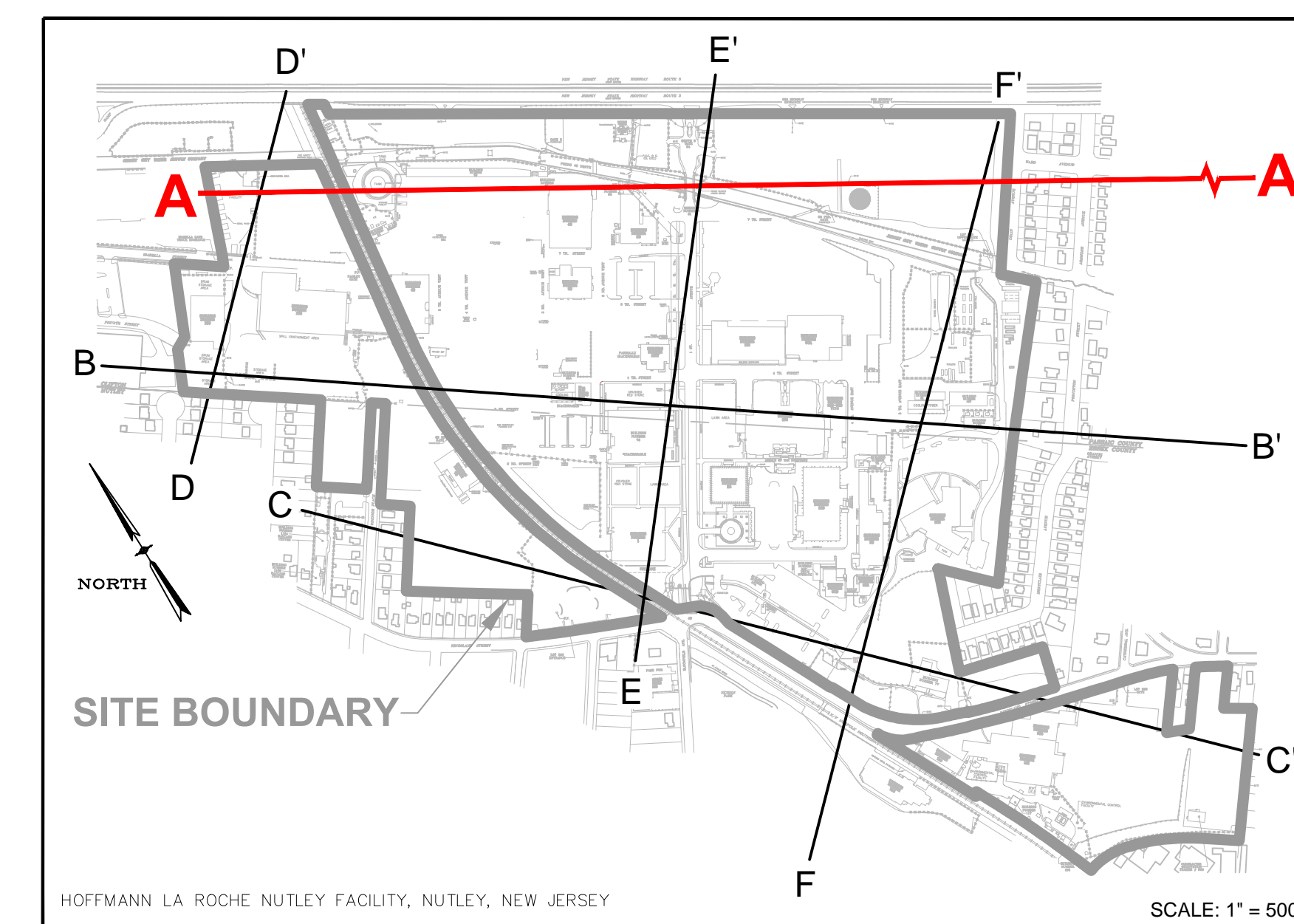
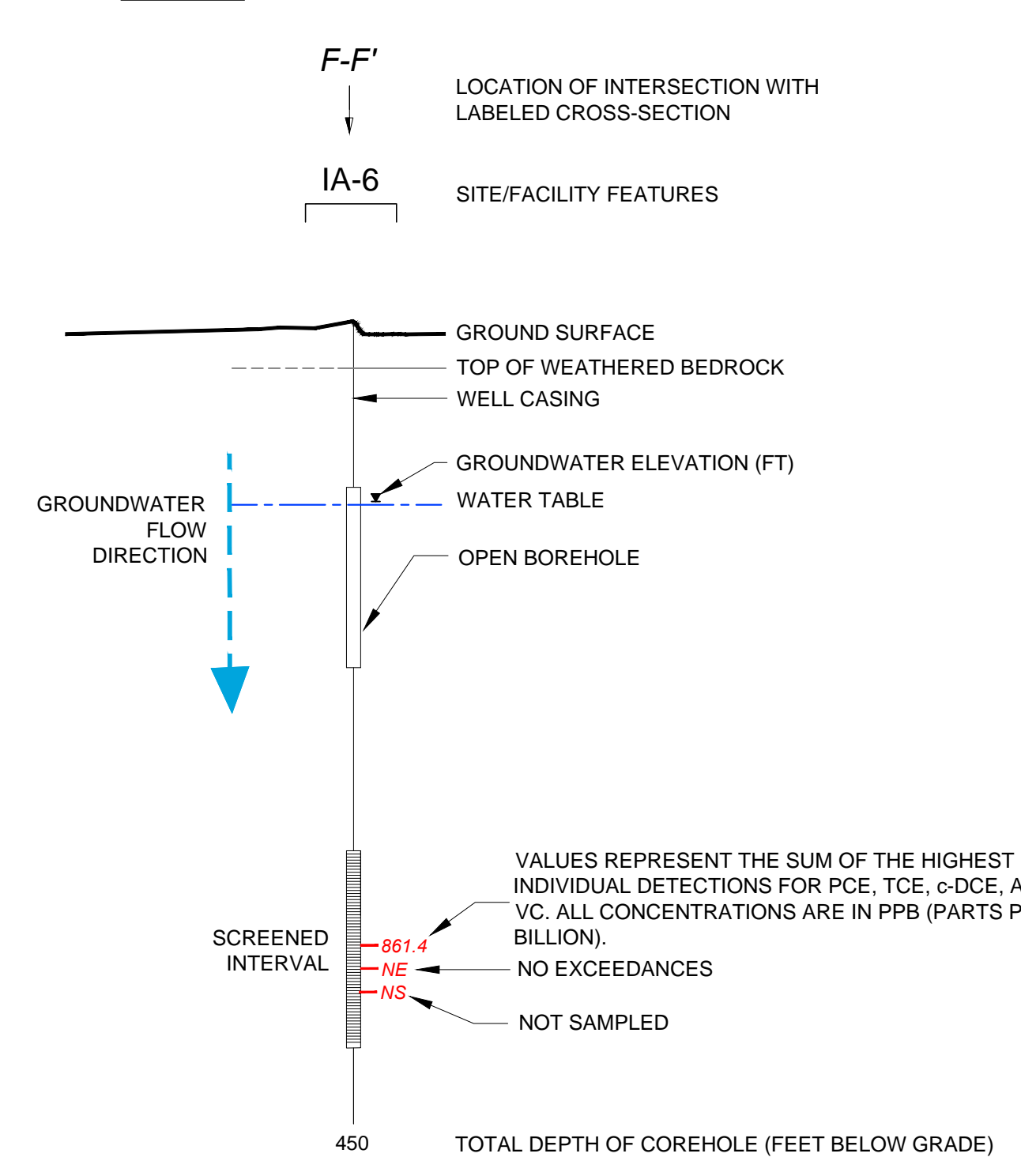


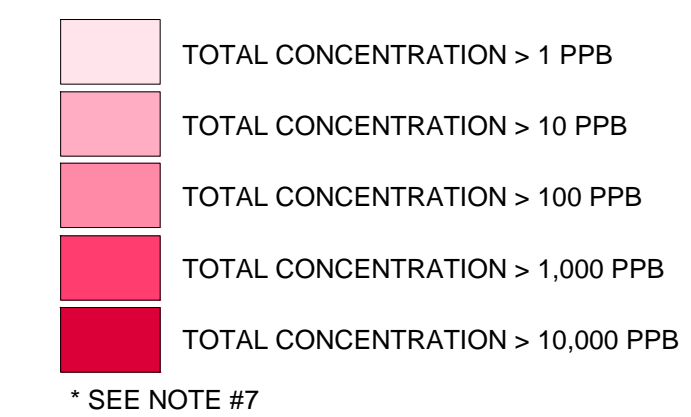
CROSS-SECTION LOCATION



LEGEND



ISOCONCENTRATION CONTOURS OF PCE AND BREAKDOWN PRODUCTS (TCE, C-DCE AND VC) >GWQS*

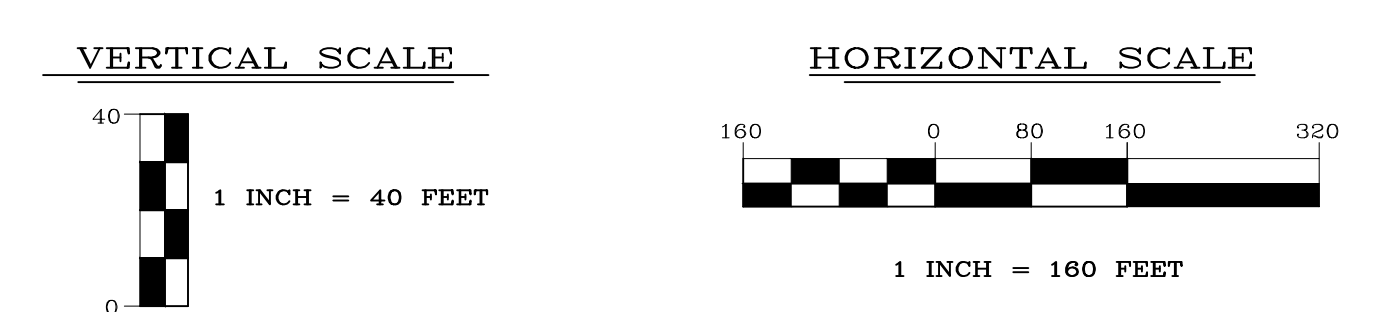


NOTES:

- COREHOLES HAVE BEEN SEALED WITH BLANK FLUTE LINERS.
- GROUND SURFACE IS BASED UPON THE SURFACE ELEVATION ALONG A-A'.
- SOME WELLS HAVE BEEN PROJECTED UP TO 300 FEET TO CONSTRUCT THIS VERTICAL SECTION AND ARE DISPLAYED AT ACTUAL SURVEYED ELEVATIONS.
- LITHOLOGIC CONTACTS ARE DASHED WHERE INFERRED.
- ELEVATION DATUM NAVD 1988; FEET ABOVE MEAN SEA LEVEL.
- R/R = RAILROAD.
- ONLY CVOCs DETECTED ABOVE NJDEP GROUND WATER QUALITY STANDARD (GWQS) ARE INCLUDED IN ISOCONCENTRATION CONTOURS.
- PDB = PASSIVE DIFFUSION BAG.
- PCE = TETRACHLOROETHENE.
- TCE = TRICHLOROETHENE.
- c-DCE = CIS-1,2-DICHLOROETHENE.
- VC = VINYL CHLORIDE.

ENGINEER IN RESPONSIBLE CHARGE OF THE WORK SHOWN ON THIS DRAWING
 DATE: _____ SIGNATURE: _____
 PROFESSIONAL ENGINEER: _____ LIC. # _____

TRC
 TRC ENVIRONMENTAL CORP.
 411 SPRING STREET
 NEW PROVIDENCE, NEW JERSEY 07974
 908-988-1700



REV	DATE	BY	DESCRIPTION
1	09/30/14	DS	FINAL ANNUAL REPORT DRAFT ISSUED FOR REVIEW
0	02/28/14	DS	DRAFT ISSUED FOR REVIEW

DRAWING TITLE				PROJECT TITLE		SCALE	
NUTLEY SITE REMEDIATION PROJECT				FIGURE 67 CVOC DISTRIBUTION IN GROUNDWATER CROSS-SECTION A-A' DECEMBER 2013 SAMPLING EVENT		AS SHOWN	
DESIGN SUPERVISOR: T. MEARA				PROJECT ENGINEER: G. CIERPIAL		BLDG. NO. _____	
PROJECT ENGINEER: M. STEBLE				PREPARED FOR: Hoffmann-La Roche Inc.		SCALE: 1" = 500'	
DRAWN BY: S. MCCRAY				340 KINGSLAND STREET NUTLEY, NEW JERSEY 07110-1199		DRAWING NO. NR-STE-S29215-C981	
CHECKED BY: M. STEBLE				ROCHE		1	
DATE: 02/27/14							

FILE: C:\GARDNER\ENR\GARDNER\GARDNER\TEMP\GARDNER\104\104233 0000 001 OF 45 DWG FILES 2013 42366L DATE: 12/10/2014 05:29:08PM