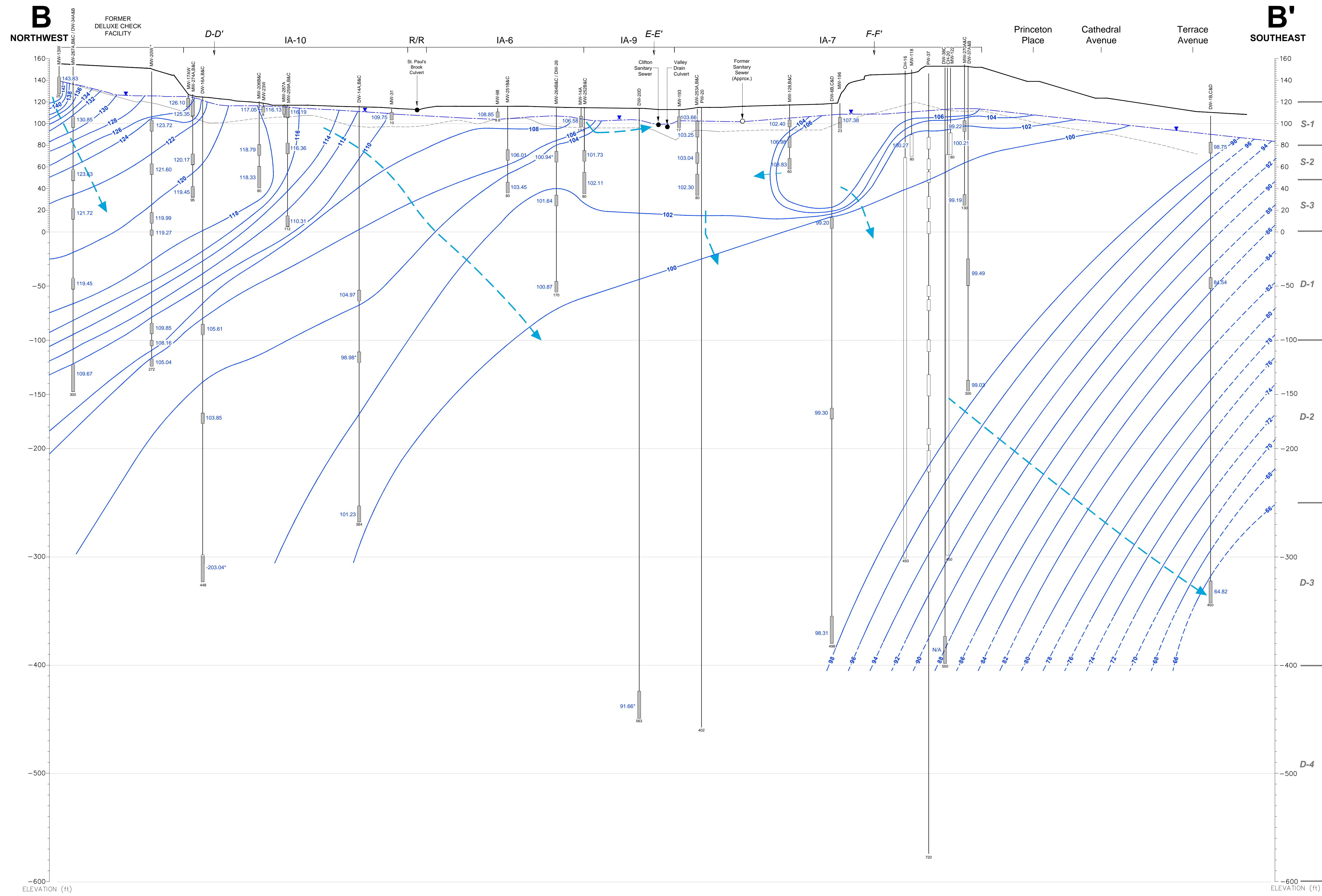
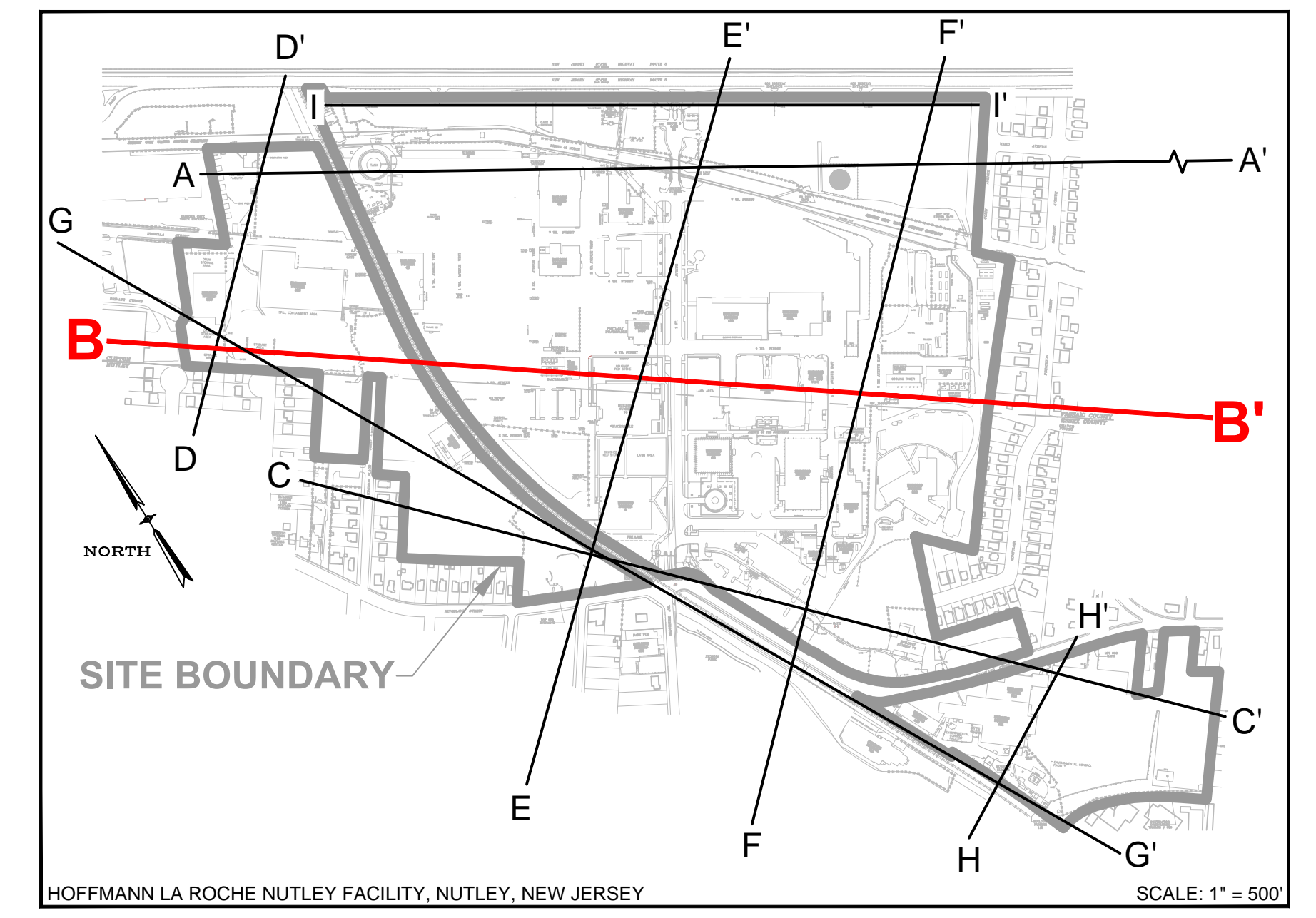
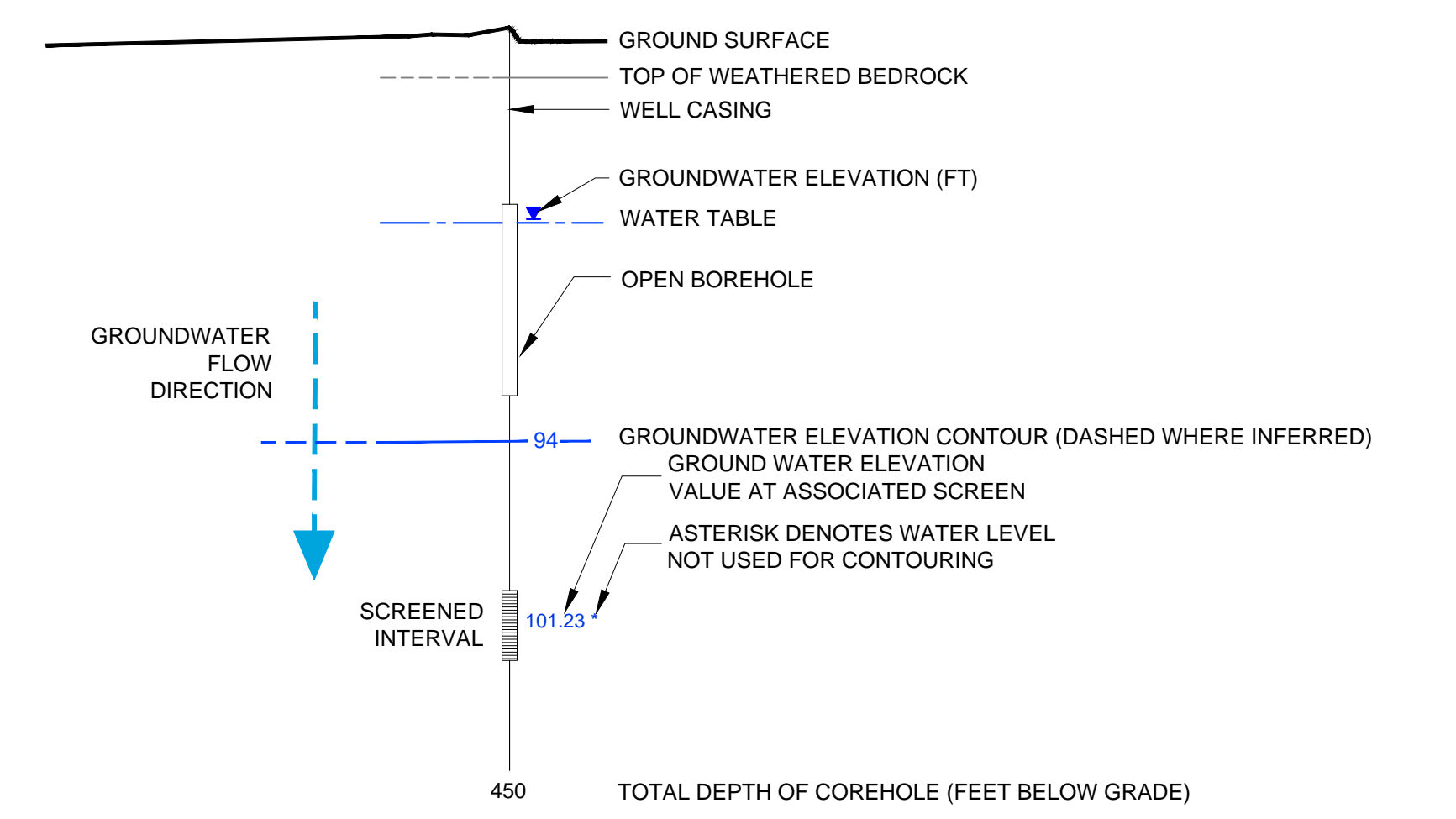


CROSS-SECTION LOCATION



LEGEND

- F-F' LOCATION OF INTERSECTION WITH LABELED CROSS-SECTION
- IA-6 SITE/FACILITY FEATURES

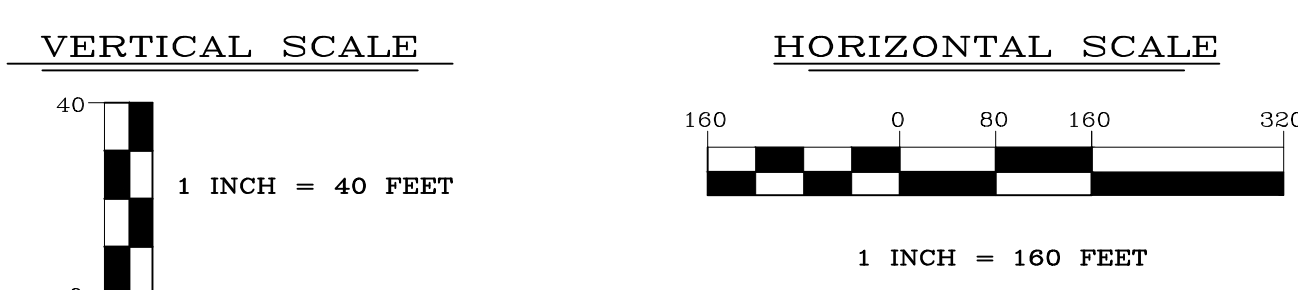


NOTES:

1. COREHOLES ARE SEALED WITH BLANK FLUTE LINERS EXCEPT PW-37 WHICH HAS A MULTI-LEVEL FLUTE.
2. GROUND SURFACE IS BASED UPON THE SURFACE ELEVATION ALONG B-B' EXCEPT WEST OF MW-17AW WHERE THE GROUND SURFACE ELEVATION IS BASED UPON SURVEYED GROUND SURFACE AT WELL LOCATIONS.
3. SOME WELLS HAVE BEEN PROJECTED UP TO 300 FEET TO CONSTRUCT THIS VERTICAL SECTION AND ARE DISPLAYED AT ACTUAL SURVEYED ELEVATIONS.
4. LITHOLOGIC CONTACTS ARE DASHED WHERE INFERRED.
5. ELEVATION DATUM NAVD 1988; FEET ABOVE MEAN SEA LEVEL.
6. R/R = RAILROAD.
7. PW-37 SHOWN FOR LOCATION PURPOSES ONLY.
8. N/A = GROUNDWATER ELEVATION NOT AVAILABLE.

ENGINEER IN RESPONSIBLE CHARGE OF THE WORK SHOWN ON THIS DRAWING
 DATE: _____ SIGNATURE: _____
 PROFESSIONAL ENGINEER: _____ LIC. # _____

TRC
 TRC ENVIRONMENTAL CORP.
 41 SPRING STREET
 NEW PROVIDENCE, NEW JERSEY 07974
 908-988-1700



REV	DATE	BY	DESCRIPTION
1	09/30/14	DS	FINAL ANNUAL REPORT DRAFT ISSUED FOR REVIEW
2	06/24/14	DS	DRAFT ISSUED FOR REVIEW

DESIGNER: T. O'NEARA	DRAWN BY: D. STEPHLE	CHECKED BY: S. MCCRAY	PROJECT NUMBER: GCIERPIAL
DESIGN SUPERVISOR: T. O'NEARA	PROJECT ENGINEER: G. STELLER	DATE: 06/24/14	SCALE: AS SHOWN
DRAWING TITLE: NUTLEY SITE REMEDIATION PROJECT			PROJECT TITLE: FIGURE 40 VERTICAL GROUNDWATER FLOW CROSS-SECTION B-B' MEASURED 06-02-14
PREPARED FOR: Hoffmann-La Roche Inc. 340 KINGSLAND STREET NUTLEY, NEW JERSEY 07110-1199			DRAWING NO.: NR-STE-S29215-C1210