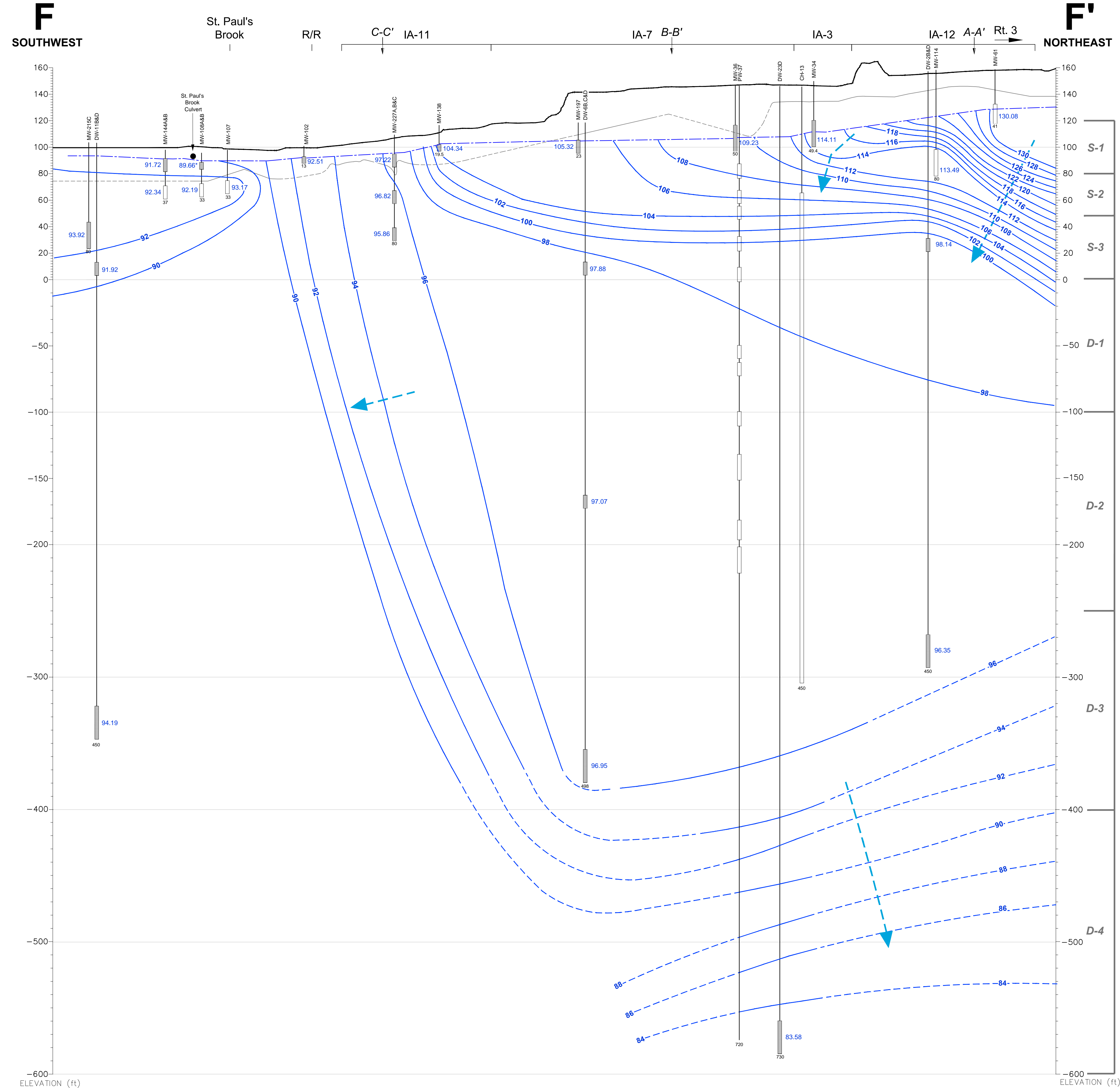
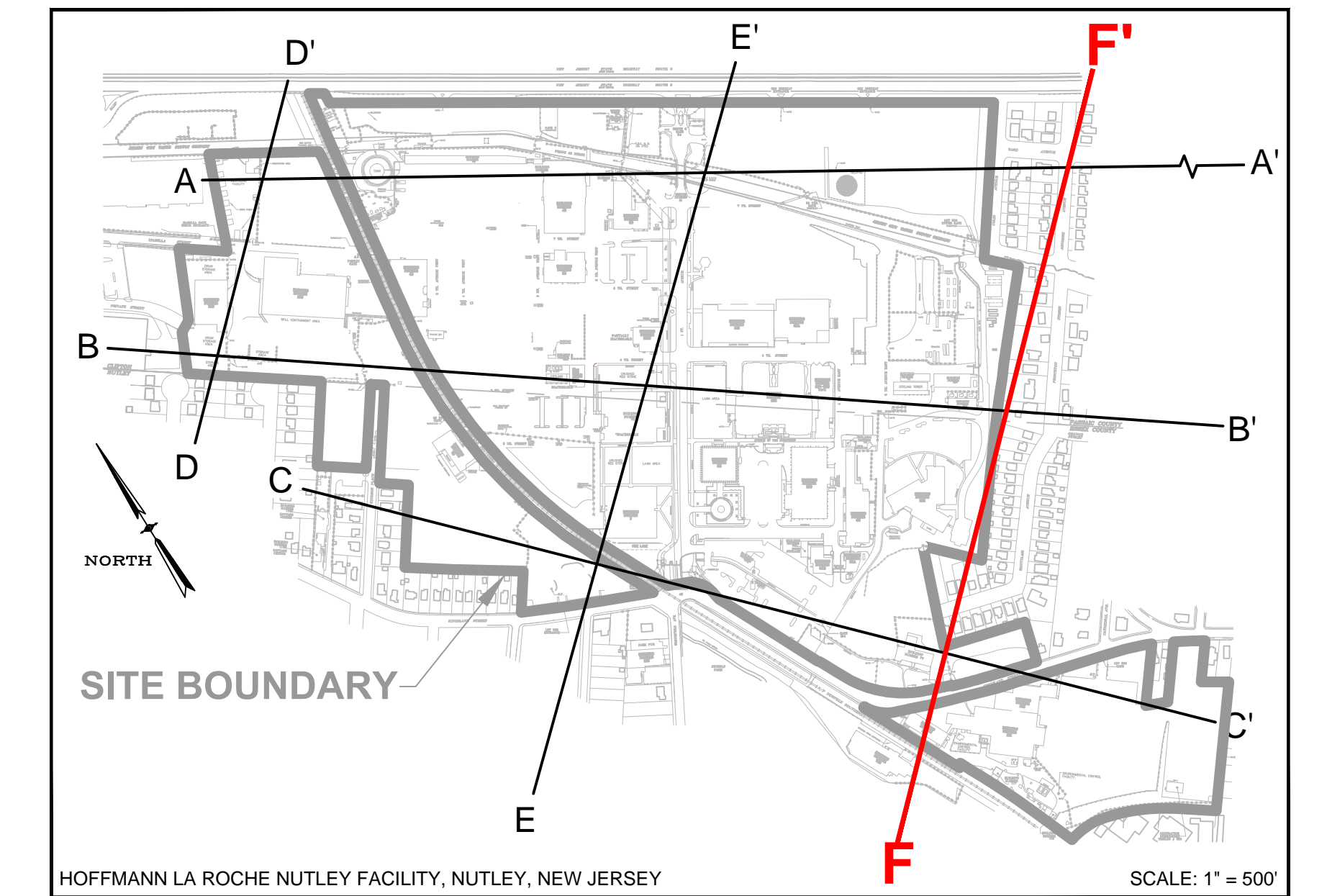
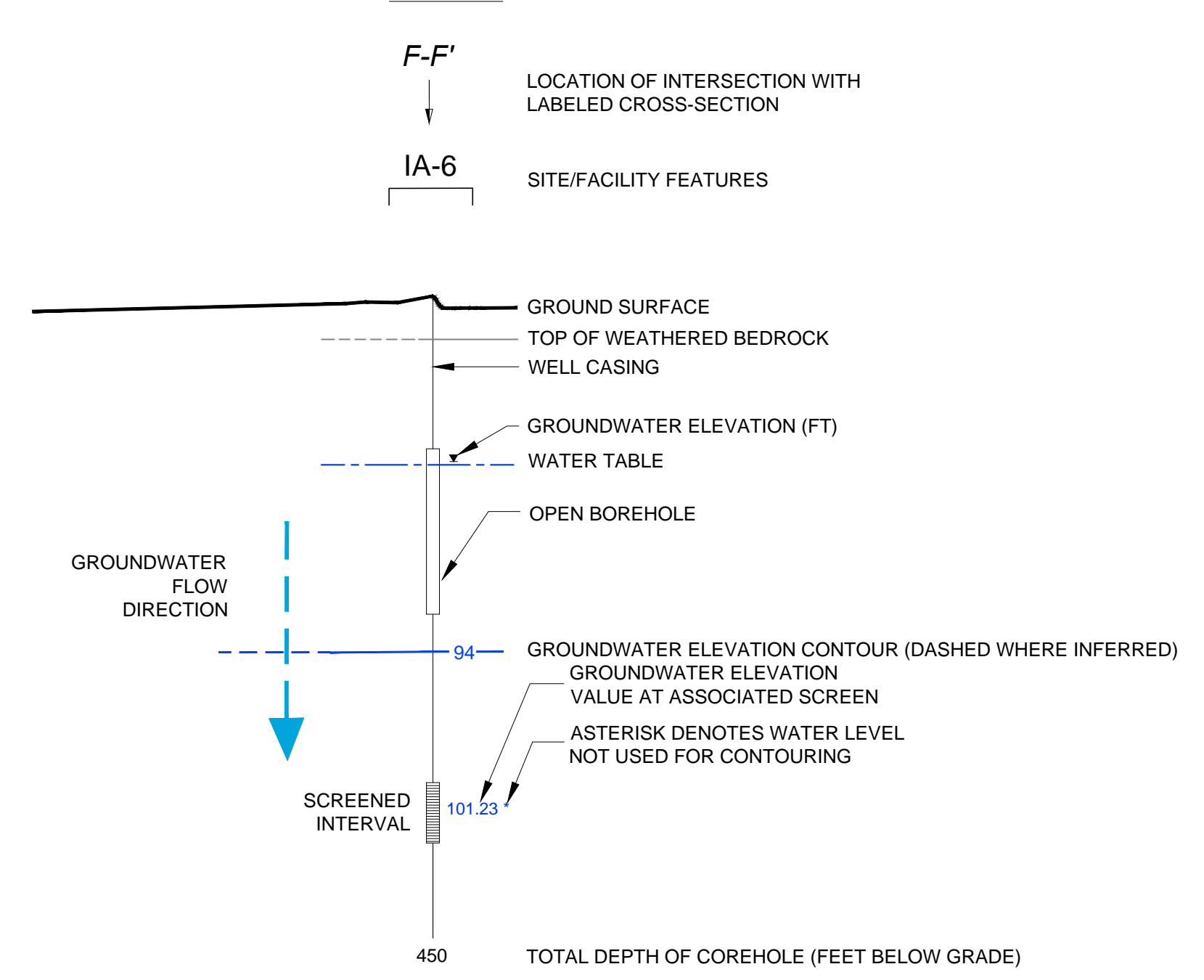


CROSS-SECTION LOCATION



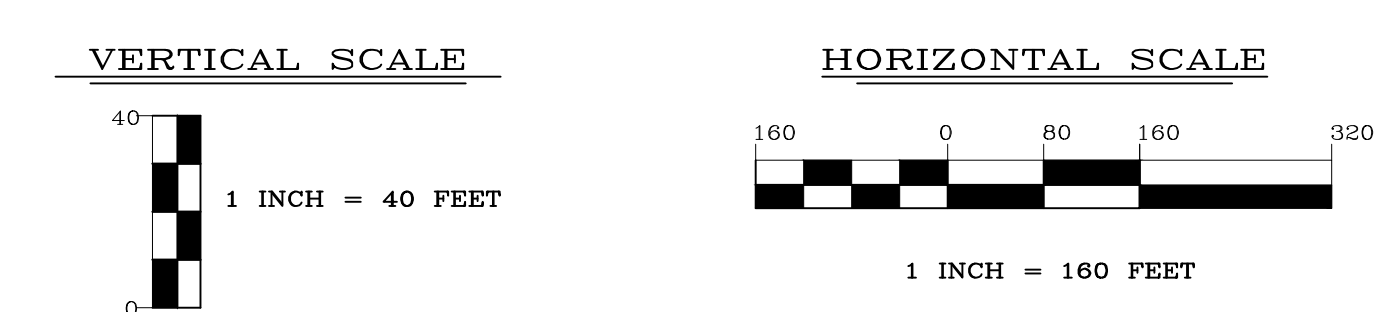
LEGEND



NOTES:

- COREHOLES ARE SEALED WITH BLANK FLUTE LINERS EXCEPT PW-37 WHICH HAS A MULTILEVEL FLUTE.
- GROUND SURFACE IS BASED UPON THE SURFACE ELEVATION ALONG F-F'.
- SOME WELLS HAVE BEEN PROJECTED UP TO 300 FEET TO CONSTRUCT THIS VERTICAL SECTION AND ARE DISPLAYED AT ACTUAL SURVEYED ELEVATIONS.
- LITHOLOGIC CONTACTS ARE DASHED WHERE INFERRED.
- ELEVATION DATUM NAVD 1988; FEET ABOVE MEAN SEA LEVEL.
- R/R = RAILROAD.
- PW-37 SHOWN FOR LOCATION PURPOSES ONLY.

ENGINEER IN RESPONSIBLE CHARGE OF THE WORK SHOWN ON THIS DRAWING
 DATE: _____ SIGNATURE: _____
 PROFESSIONAL ENGINEER: _____ LIC. # _____



REV	DATE	BY	DESCRIPTION
1	09/30/14	DS	FINAL ANNUAL REPORT DRAFT ISSUED FOR REVIEW
0	03/05/14	DS	DRAFT ISSUED FOR REVIEW

DRAWING TITLE				PROJECT TITLE				SCALE	
NUTLEY SITE REMEDIATION PROJECT				FIGURE 38 VERTICAL GROUNDWATER FLOW CROSS-SECTION F-F' MEASURED 03-17-14				AS SHOWN BLDG. NO.	
DESIGNED BY	DRAWN BY	CHECKED BY	PROJECT ENGINEER	PREPARED FOR	Hoffmann-La Roche Inc.			340 KINGSLAND STREET NUTLEY, NEW JERSEY 07110-1199	
F.OMEARA	T. STEHLE	S. CRAY	G. CIERPIAL	NR-STE-S29215-C1050					

FILE: \\wsl\jrm\p21\DRAWING\FILES\VISION PROJECTS\155019\016_WBZ_GROUND WATER REPORT FIGURES\ANNUAL REPORT\01_2014\A-SEC_DATE: 12/10/2014 10:36:01AM