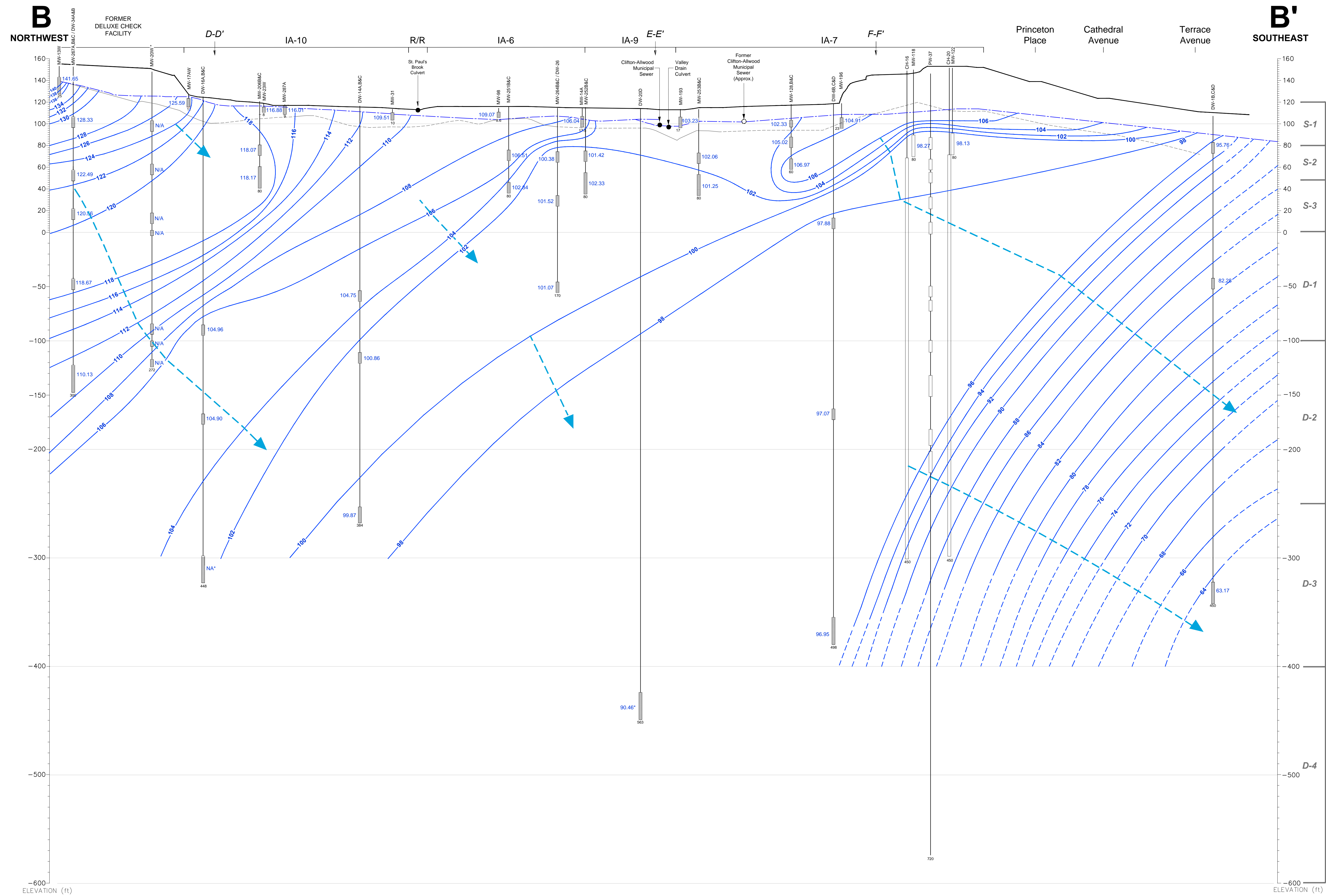
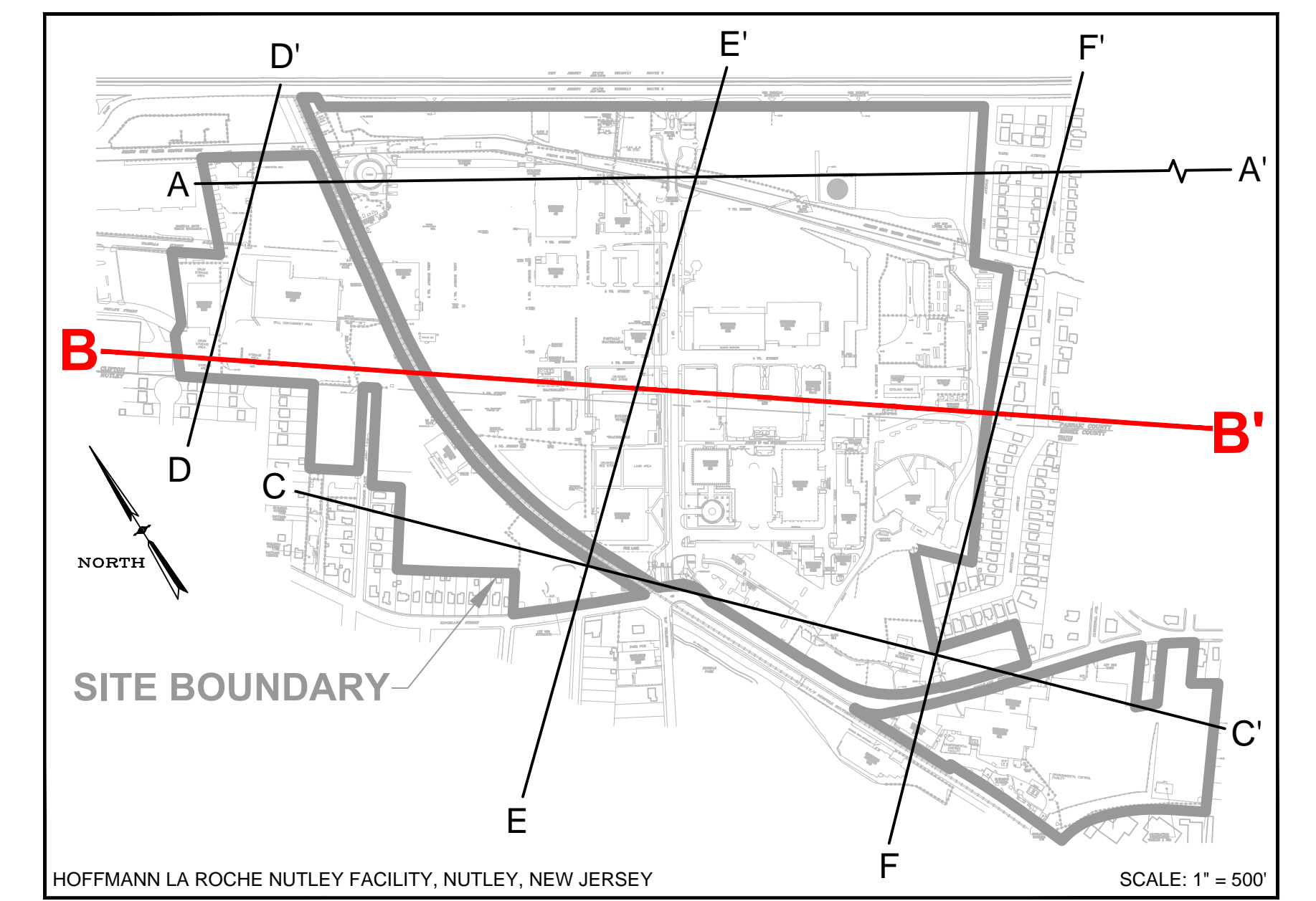
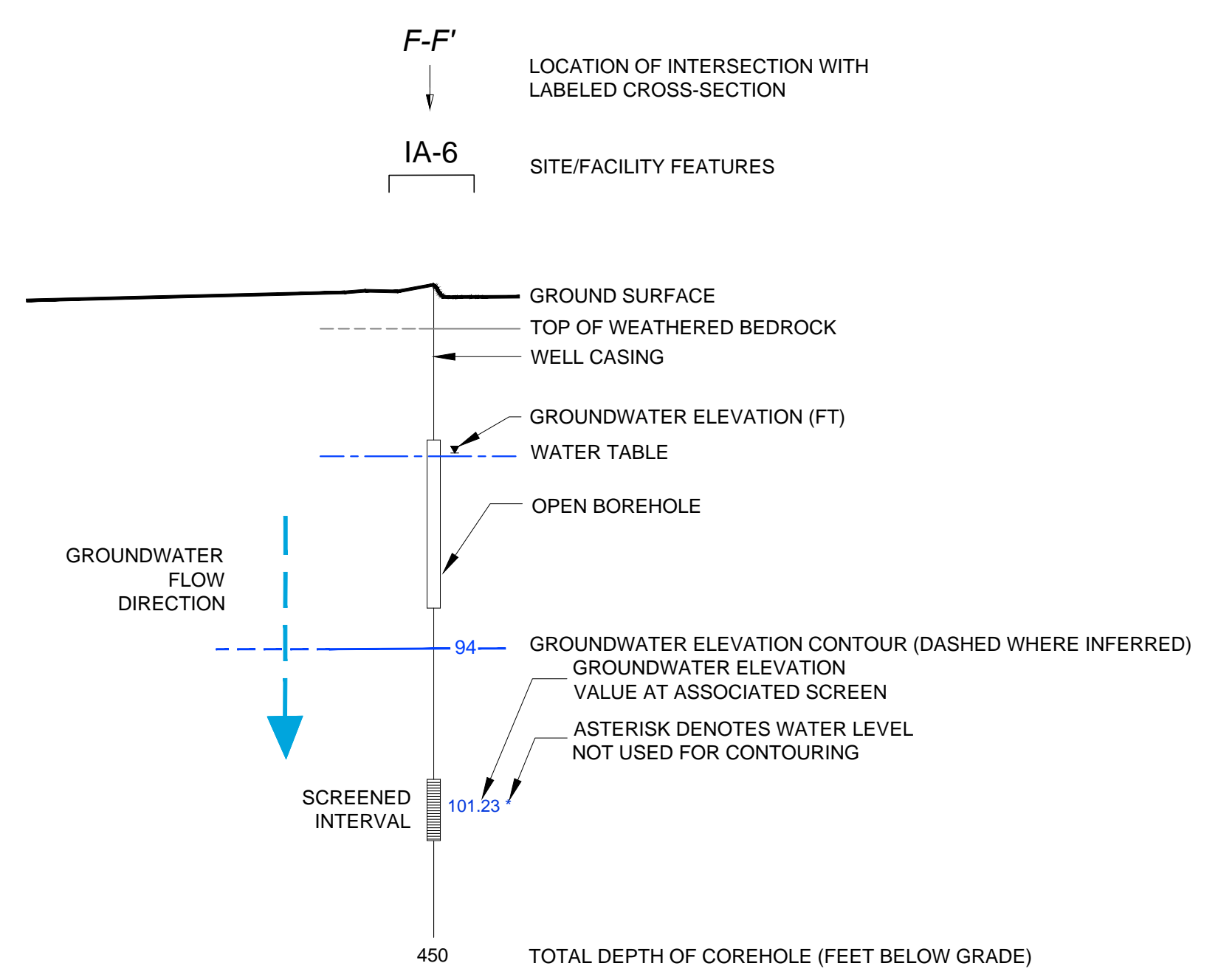


CROSS-SECTION LOCATION



LEGEND

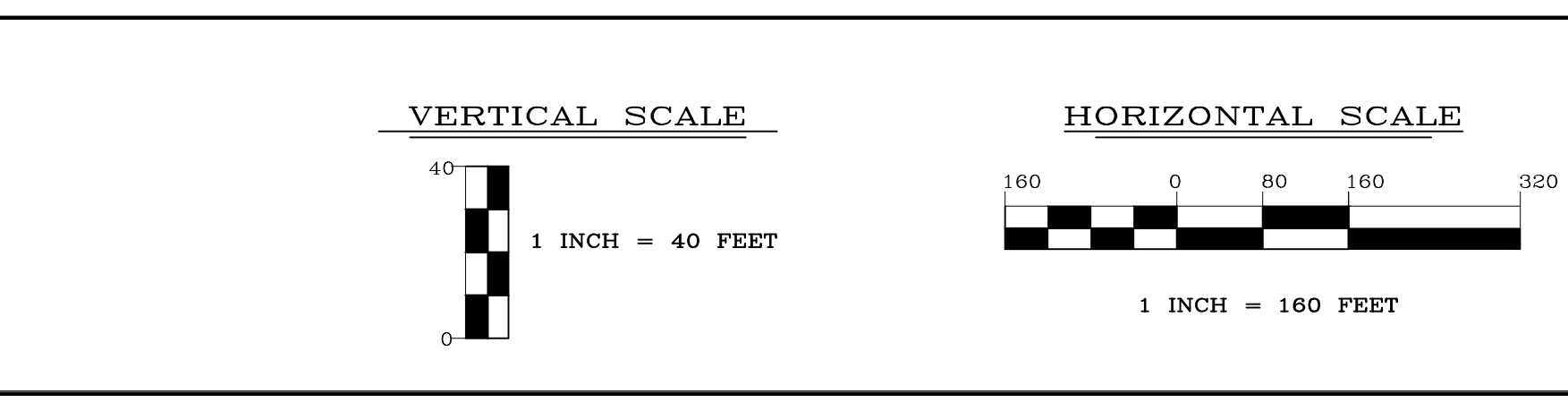


NOTES:

1. COREHOLES ARE SEALED WITH BLANK FLUTE LINERS EXCEPT PW-37 WHICH HAS A MULTI-LEVEL FLUTE.
2. GROUND SURFACE IS BASED UPON THE SURFACE ELEVATION ALONG B-B' EXCEPT WEST OF MW-17AW WHERE THE GROUND SURFACE ELEVATION IS BASED UPON SURVEYED GROUND SURFACE AT WELL LOCATIONS.
3. SOME WELLS HAVE BEEN PROJECTED UP TO 300 FEET TO CONSTRUCT THIS VERTICAL SECTION AND ARE DISPLAYED AT ACTUAL SURVEYED ELEVATIONS.
4. LITHOLOGIC CONTACTS ARE DASHED WHERE INFERRED.
5. ELEVATION DATUM NAVD 1988, FEET ABOVE MEAN SEA LEVEL.
6. R/R = RAILROAD.
7. PW-37 SHOWN FOR LOCATION PURPOSES ONLY.
8. N/A = GROUNDWATER ELEVATION NOT AVAILABLE.

ENGINEER IN RESPONSIBLE CHARGE OF THE WORK SHOWN ON THIS DRAWING
 DATE: _____ SIGNATURE: _____
 PROFESSIONAL ENGINEER: _____ LIC. # _____

TRC
 TRC ENVIRONMENTAL CORP.
 41 SPRING STREET
 NEW PROVIDENCE, NEW JERSEY 07974
 908-988-1700



REV	DATE	BY	DESCRIPTION
1	09/30/14	DS	FINAL ANNUAL REPORT DRAFT ISSUED FOR REVIEW
0	03/05/14	DS	DRAFT ISSUED FOR REVIEW

DRAWING TITLE: NUTLEY SITE REMEDIATION PROJECT
 PROJECT TITLE: FIGURE 35 VERTICAL GROUNDWATER FLOW CROSS-SECTION B-B' MEASURED 03-17-14
 SCALE: AS SHOWN
 BLDG. NO.:
 DESIGNED BY: T. O'NEARA, DRAWN BY: D. STEPHLE, CHECKED BY: S. MCCRAY, PROJECT ENGINEER: G. CIERPIAL
 SUPERVISOR: J. ZEMER, APPROVED BY: J. S. GELLER
 PREPARED FOR: Hoffmann-La Roche Inc., 340 KINGSLAND STREET, NUTLEY, NEW JERSEY 07110-1199
 DRAWING NO.: NR-STE-S29215-C1047

FILE: C:\USERS\GREGOR\APPDATA\LOCAL\TEMP\APR04L\K25V1R6231 0000 205 01 10 04 12.dwg, DATE: 12/10/2014 10:33:58AM