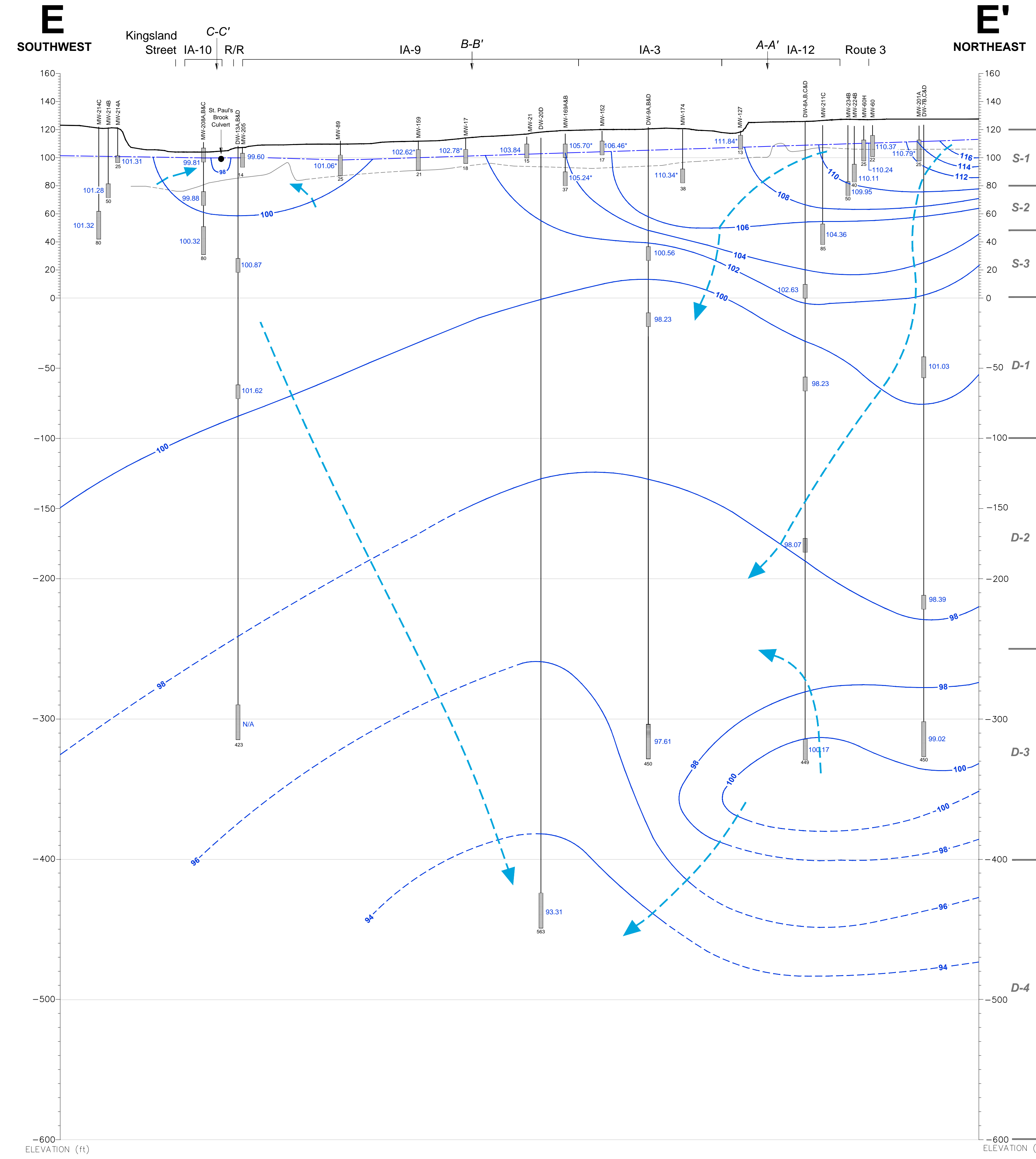
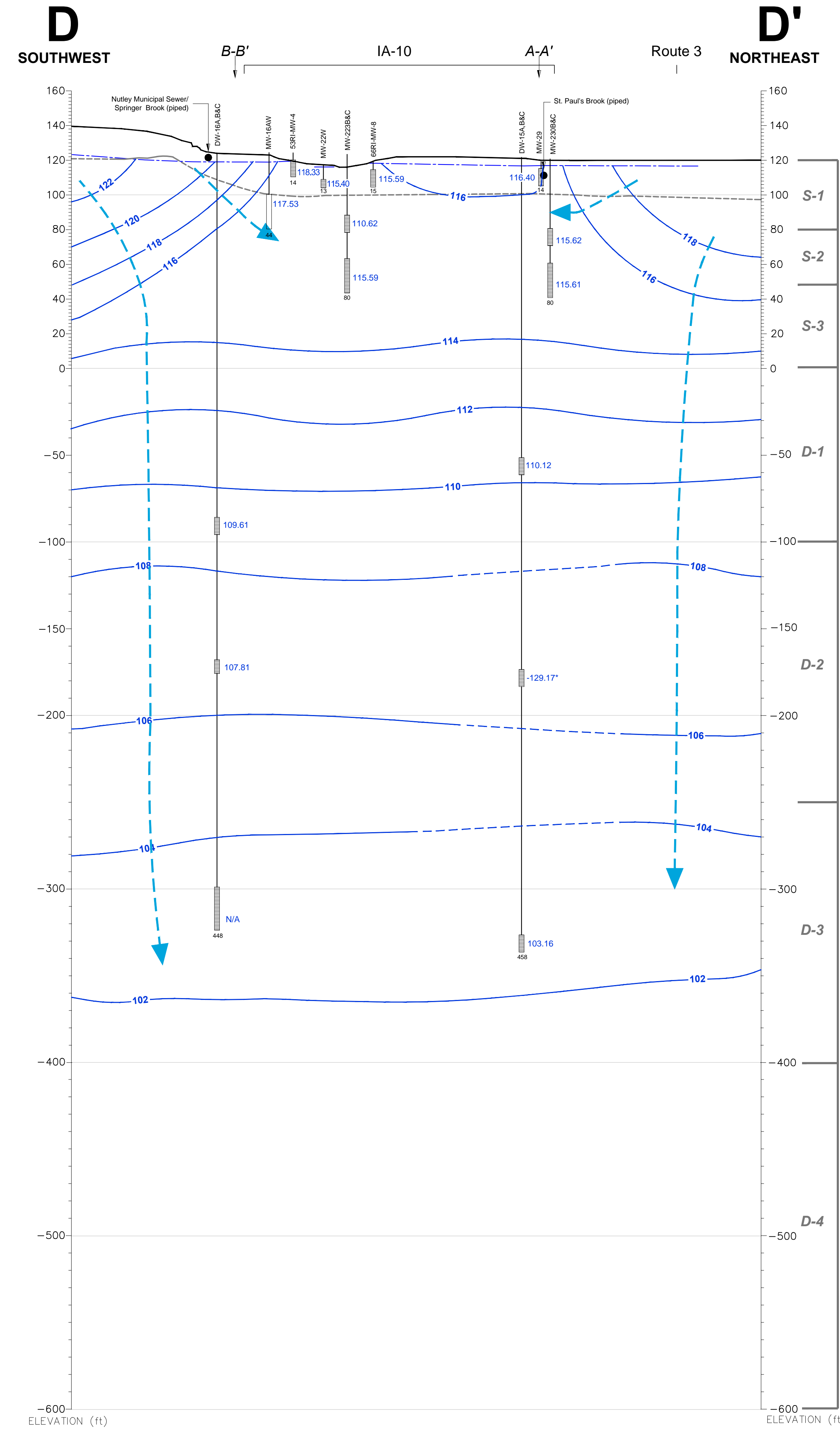
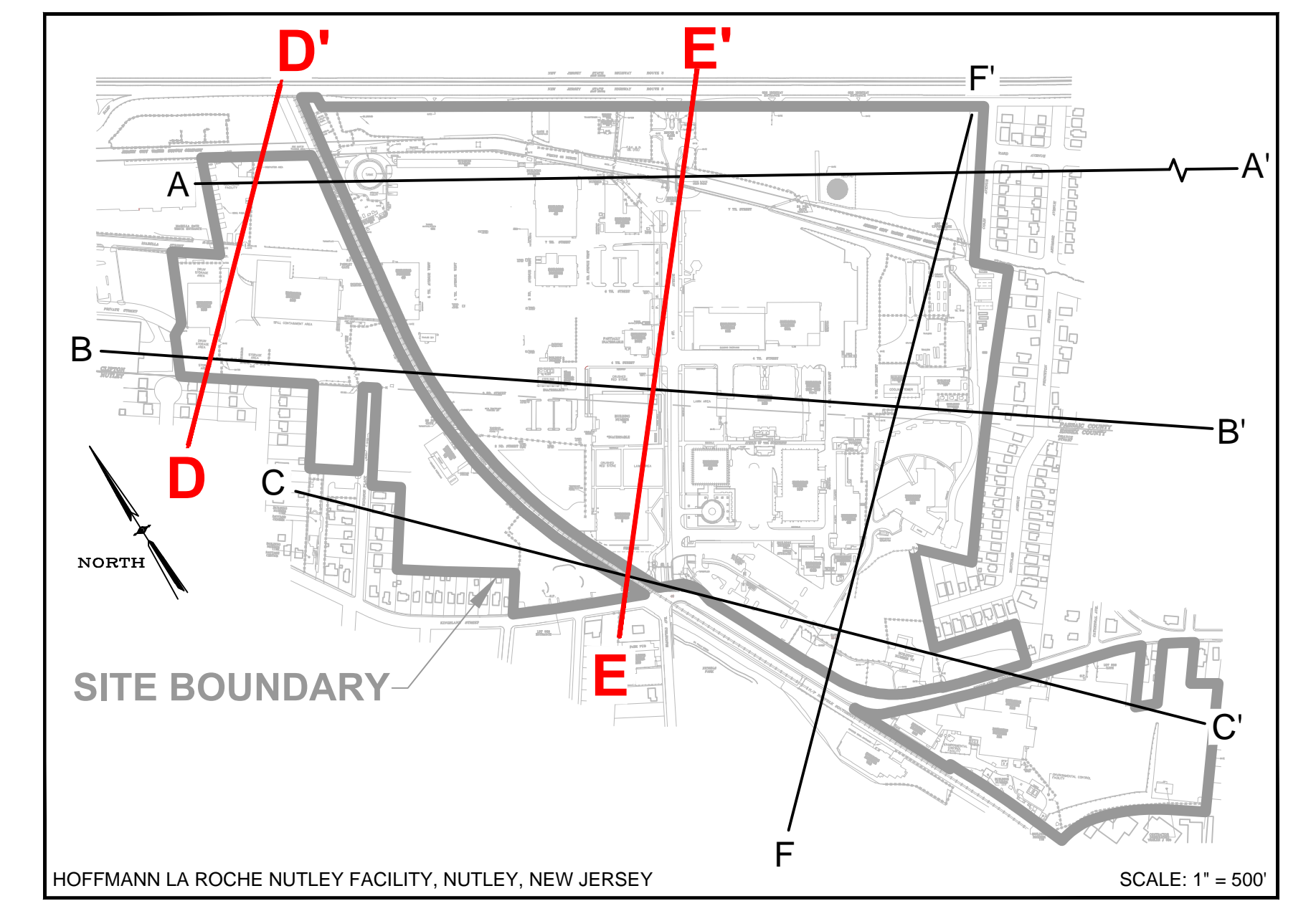
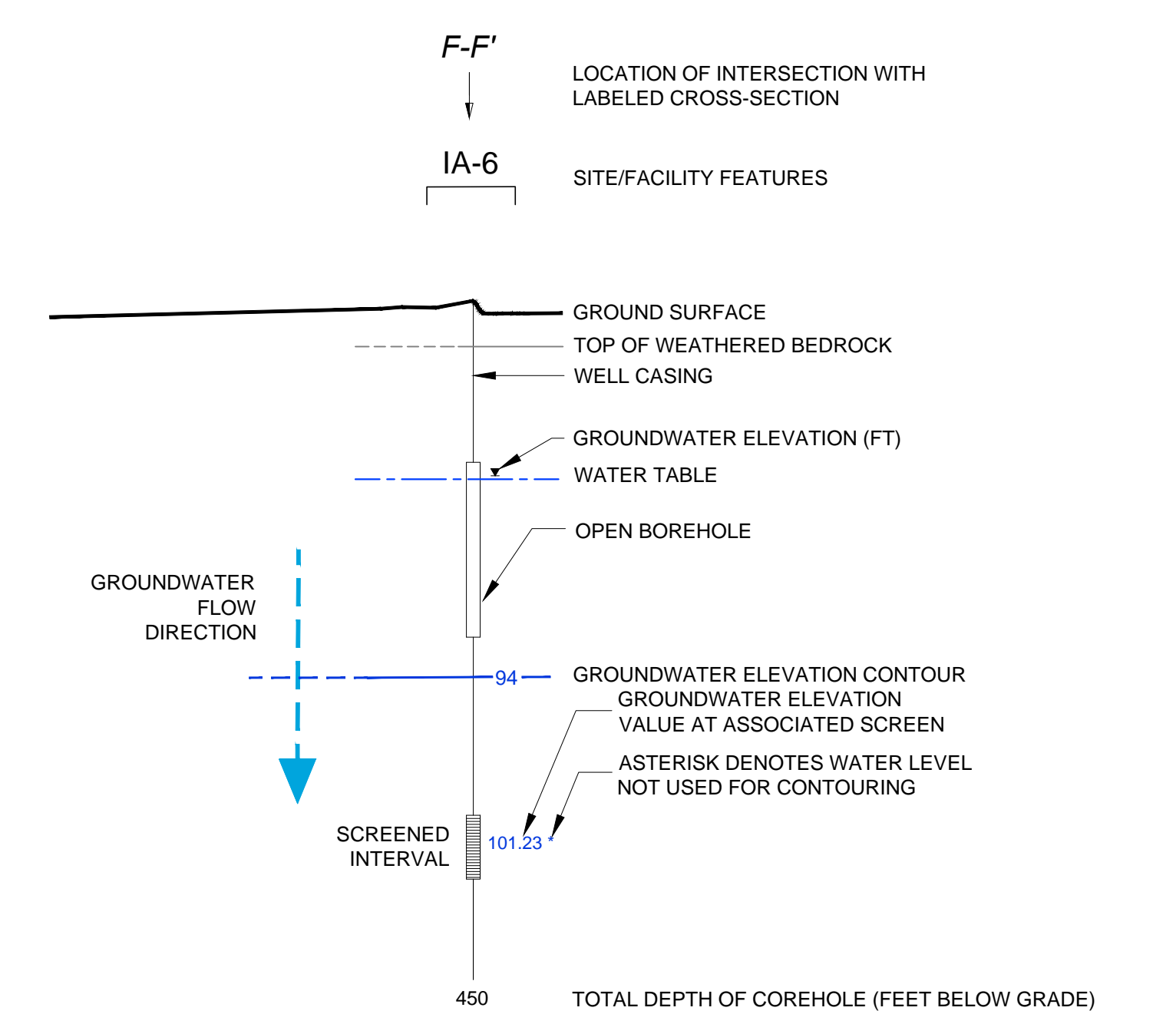


CROSS-SECTION LOCATION



LEGEND



NOTES:

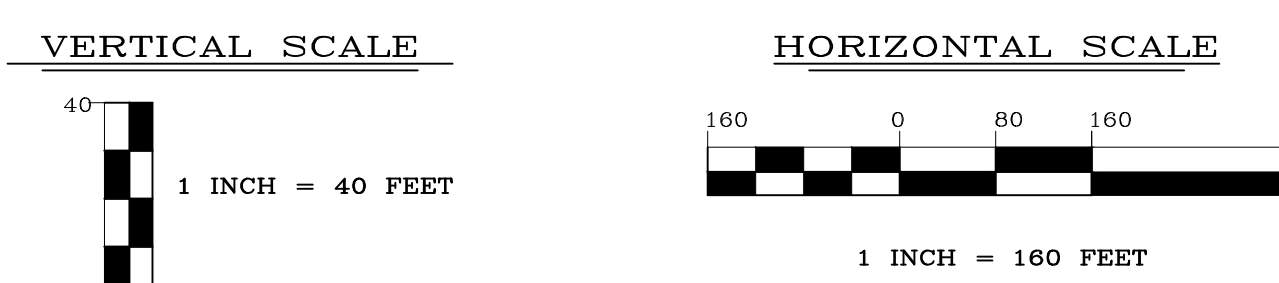
- COREHOLES HAVE BEEN SEALED WITH BLANK FLUTE LINERS.
- GROUND SURFACE IS BASED UPON THE SURFACE ELEVATION ALONG D-D' AND E-E'.
- SOME WELLS HAVE BEEN PROJECTED UP TO 300 FEET TO CONSTRUCT THIS VERTICAL SECTION AND ARE DISPLAYED AT ACTUAL SURVEYED ELEVATIONS.
- LITHOLOGIC CONTACTS ARE DASHED WHERE INFERRED.
- ELEVATION DATUM NAVD 1988; FEET ABOVE MEAN SEA LEVEL.
- NA = GROUNDWATER ELEVATION NOT AVAILABLE.

ENGINEER IN RESPONSIBLE CHARGE OF THE WORK SHOWN ON THIS DRAWING

DATE: _____ SIGNATURE: _____

PROFESSIONAL ENGINEER: **TRC**

TRC
TRC ENVIRONMENTAL CORP.
41 SPRING STREET
NEW PROVIDENCE, NEW JERSEY 07974
908-988-1700



REV	DATE	BY	DESCRIPTION
1	09/30/14	OS	FINAL ANNUAL REPORT DRAFT ISSUED FOR REVIEW
0	03/05/14	OS	DRAFT ISSUED FOR REVIEW

DRAWING TITLE NUTLEY SITE REMEDIATION PROJECT		PROJECT TITLE FIGURE 32 VERTICAL GROUNDWATER FLOW CROSS-SECTION D-D' & E-E' MEASURED 12-12-13		SCALE AS SHOWN BLDG. NO.
DESIGNED BY T.D. MEARA	DRAWN BY J. STEHLE	CHECKED BY S. CRAY	PROJECT NUMBER G.CIERP/AL	PREPARED FOR Hoffmann-La Roche Inc. 340 KINGSLAND STREET NUTLEY, NEW JERSEY 07110-1199
DESIGN SUPERVISOR PROJECT ENGINEER			DRAWING NO. NR-STE-S29215-C990	